

THE LOG HOME **PLANBOOK**

50+
LOG HOME
PLANS!



DESIGN IDEAS, PHOTOS
DETAILED PLANS & BLUEPRINTS

USE OF DOCUMENT AND LICENSE:



The Book Is Licensed Under A Creative Commons (CC) license - **Attribution + NoDerivatives**

You are allowed to distribute this book anywhere as long as it is NOT modified in any way

For more information on Creative Commons License, [please click here](#)

Last Updated: July 2010

The design of this document and all text, graphics, information, content, and other material displayed in or that can be downloaded from this document are protected by US and International copyright, trademark and other laws. The contents of this document are Copyright (c) I Love Log Homes, or their respective affiliates and suppliers. All rights reserved. Any violation of the license may violate copyright laws, trademark laws, laws of privacy and publicity, and other laws and regulations.

TABLE OF CONTENTS:

USE OF DOCUMENT AND LICENSE:.....	1
1. Log Home Plan: The Anstey	5
2. Log Home Plan: The Ashton.....	7
3. Log Home Plan: The Baskahegan	9
4. Log Home Plan: The Bretton Woods.....	10
Download 16,000 Woodworking Plans	11
5. Log Home Plan: The Allegany	12
6. Log Home Plan: The Brunswick.....	13
7. Log Home Plan: The Allegany	14
8. Log Home Plan: The Camden	16
9. Log Home Plan: The Allegany	17
10. Log Home Plan: The Caribou	19
Want To Build Sheds Like These?.....	21
11. Log Home Plan: The Cedar Heights	22
12. Log Home Plan: The Cedar Heights	23
13. Log Home Plan: The Cedar Lane	25
14. Log Home Plan: The Charleston	27
15. Log Home Plan: The Coopersburg.....	28
16. Log Home Plan: The Golden	30

17. Log Home Plan: The Kamloops..... 32

18. Log Home Plan: The Kelowna..... 35

 Simple Trick Cracks The Code To Making Any DIY Project..... 36

19. Log Home Plan: The Cedar Grove..... 37

20. Log Home Plan: The Kingswood 41

21. Log Home Plan: The Lafayette 42

22. Log Home Plan: The Leavitt 45

 Get The \$90,000 Per Year Home Woodworking Business Blueprint..... 48

23. Log Home Plan: The Lexington..... 49

24. Log Home Plan: The Matagamon..... 51

25. Log Home Plan: The Savannah..... 53

26. Log Home Plan: The Seymour 55

27. Log Home Plan: The Snowdonia 58

28. Log Home Plan: The Sorrento 62

29. Log Home Plan: The Stillwater 66

30. Log Home Plan: The Truckee..... 68

 Download 16,000 Woodworking Plans 70

31. Log Home Plan: The Upland Retreat..... 71

32. Log Home Plan: The Vernon..... 74

33. Log Home Plan: The Woodhaven 77

34. Log Home Plan: The Victoria 80

35. Log Home Plan: The Walton's Mountain 83
 Want To Build Sheds Like These?..... 85

36. Log Home Plan: The Washington Harbor..... 86

37. Log Home Plan: The Wood River..... 88

38. Log Home Plan: The Musquash 90

39. Log Home Plan: The Point Judith..... 92

40. Log Home Plan: The Princeton 94

41. Log Home Plan: The Riverton..... 96

42. Log Home Plan: The Sedona..... 98

43. Log Home Plan: The Darlington 100
 Simple Trick Cracks The Code To Making Any DIY Project.....102

44. Log Home Plan: The Decatur 103

45. Log Home Plan: The Easton.....105

46. Log Home Plan: The Crested Butte107

47. Log Home Plan: The Cumberland.....110

48. Log Home Plan: The Dakota 112

49. Log Home Plan: The Hidden Creek..... 115

50. Log Home Plan: The Hickory Falls 118
 Download 16,000 Woodworking Plans 121

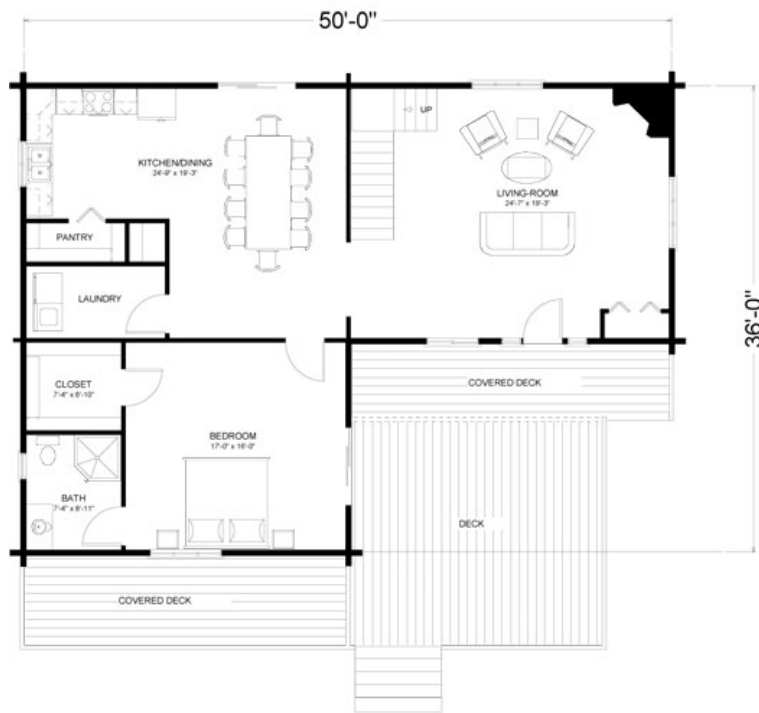
1. Log Home Plan: The Anstey

By: [Big Foot Log and Timber Homes](#)

The Anstey combines relaxed ranch style with a 2,370 square foot open floor plan. The large wraparound front porch is perfect for outdoor entertaining. The large master bedroom features a walk-in closet and an ensuite bathroom.

A full bathroom upstairs complements the additional two bedrooms. The wraparound front porch provides space for entertaining or enjoying the outdoors, no matter what the weather. The open kitchen and dining area are a great for family gatherings.





2. Log Home Plan: The Ashton

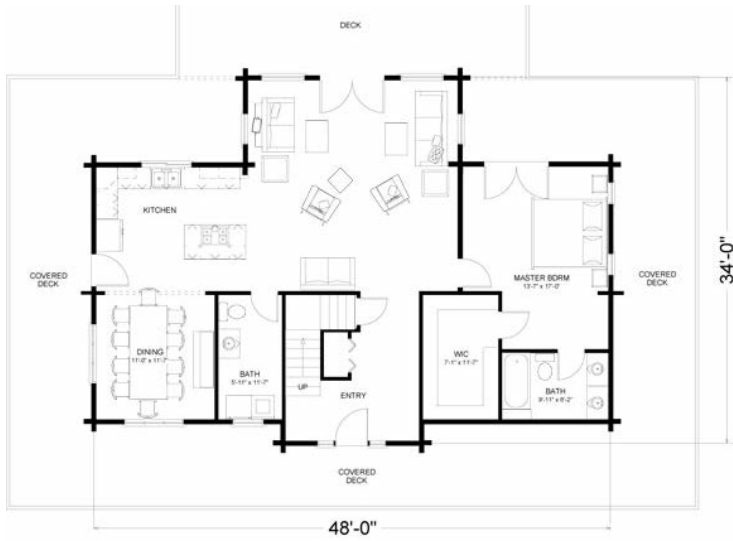
By: [Big Foot Log and Timber Homes](#)

Perfect for hillside lots or any land with a view, the 2,035 sq. ft. Ashton is well-designed with excellent separation of space. The main floor includes a dramatic entryway into the great room.

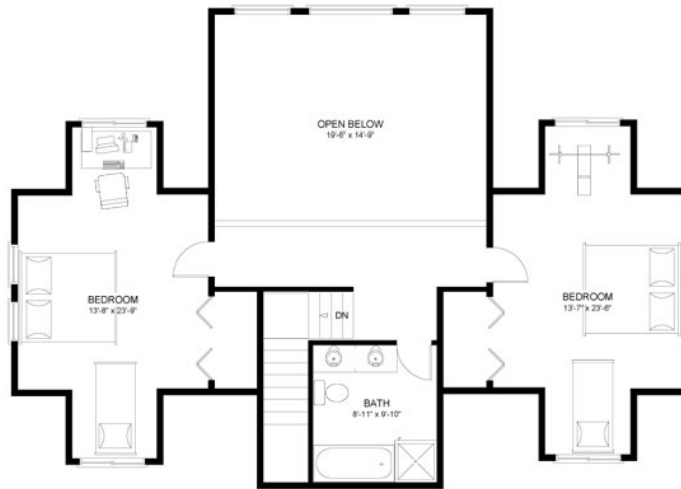
The kitchen is nicely sized with an adjoining dining area, making entertaining easy and comfortable. The master bedroom is spacious, and it includes a generous walk-in closet and adjoining bathroom with double sinks. An optional deck provides easy access to the outdoors. French doors and lots of windows add to the ambiance.

The second floor includes two more generously sized bedrooms and a full bathroom. Add a daylight basement for even more square footage.





MAIN FLOOR
1375 SQ FT



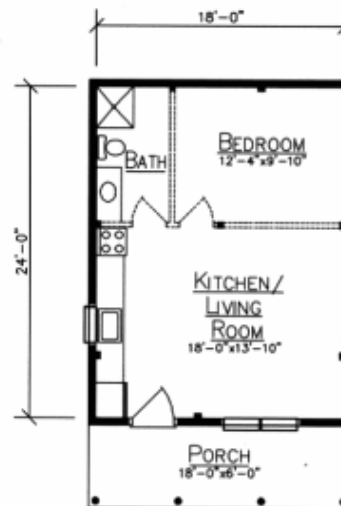
SECOND FLOOR
660 SQ FT

3. Log Home Plan: The Baskahegan

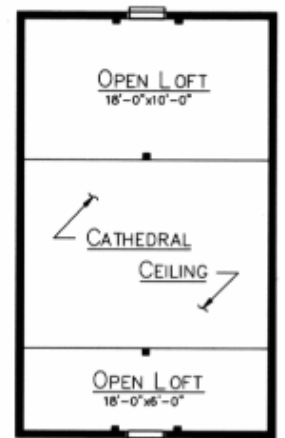
By: [Ward Cedar Log Homes](#)

Ideal for the lake, the mountains, even the ocean, building one of our Camp Series cabins will give you the ultimate weekend and vacation getaway.

All of the camp designs have open floor plans and sleeping lofts, suggesting a return to the simple life". The Baskahegan and Matagamon's sleeping lofts extend out over the porch for even more space, while the Telos and the Musquash offer larger front porches so you can spend as much time as possible enjoying the outdoors.



BASKAHEGAN FIRST FLOOR PLAN



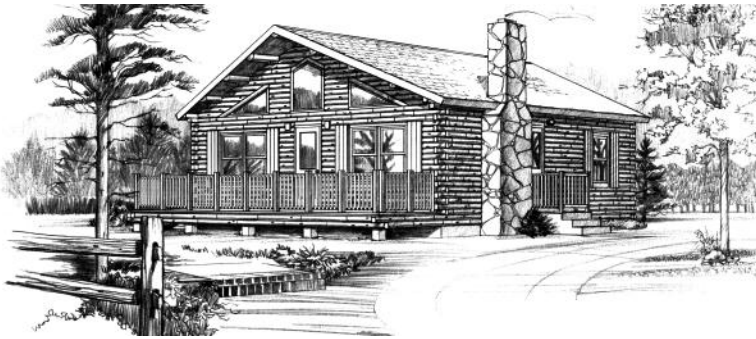
BASKAHEGAN LOFT PLAN

4. Log Home Plan: The Bretton Woods

By: [Ward Cedar Log Homes](#)

With its inviting atmosphere, the Bretton Woods is well-suited to a family looking for an efficient, charming home. The floor plan has a large living/dining space that is attached to an open kitchen.

This home has two bedrooms, each having ample closet space and sharing a full bath. The large front deck offers additional living and entertaining space and adds to the charm of this home.



FLOOR PLAN

Download 16,000 Woodworking Plans

This is a collection of [16,000 woodworking plans](#) (the worlds largest collection available online or anywhere else).

From decks, to sheds, to furniture and crafts, to chairs & tables, to file cabinets and more. This is the handyman woodworkers dream collection.



16,000 Woodworking Projects

- ✓ Decks
- ✓ Sheds
- ✓ Greenhouses
- ✓ Chairs & Tables
- ✓ File Cabinets
- ✓ And Much More!

#1 Woodworking Resource

Download Now!



Thousands of Ideas For Your Next Project!

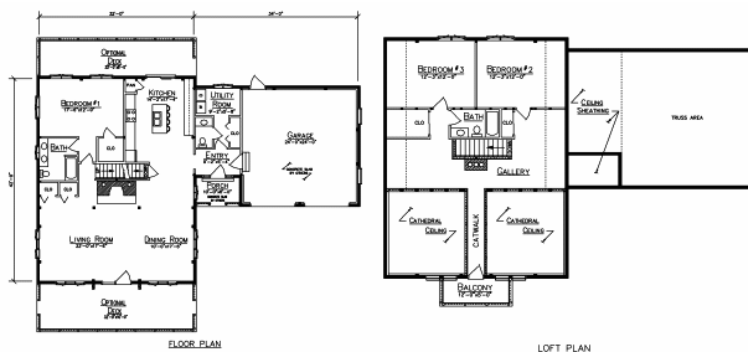


5. Log Home Plan: The Allegany

By: [Ward Cedar Log Homes](#)

The Allegany provides space beauty and charm in a comfortable floor plan perfect for families. Entry from both the porch and garage as well as a snack-bar in the kitchen offer convenience for families on the go.

The utility room and lavatory between the garage and kitchen are great places to clean up after time outdoors. On the first floor, the spacious master suite with its walk in closet and adjacent bath provide both privacy and comfort. Upstairs two bedrooms share a full bath and a catwalk runs from the gallery to the front balcony.

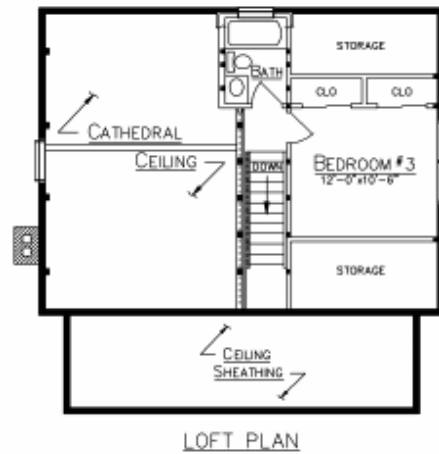
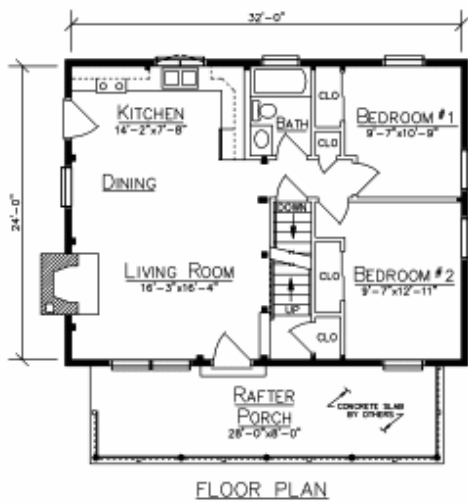


6. Log Home Plan: The Brunswick

By: [Ward Cedar Log Homes](#)

The Brunswick's comfortable design makes it a great vacation home or a delight for first-time buyers. The front porch is a gracious addition running the length of this traditional log home.

The first floor features two bedrooms, ample closet space and a full bath. The spacious living and dining area is open with a convenient kitchen at the far end. A cathedral ceiling opens up the living area in grand fashion. A third loft bedroom and bath make for a wonderful master bedroom suite.



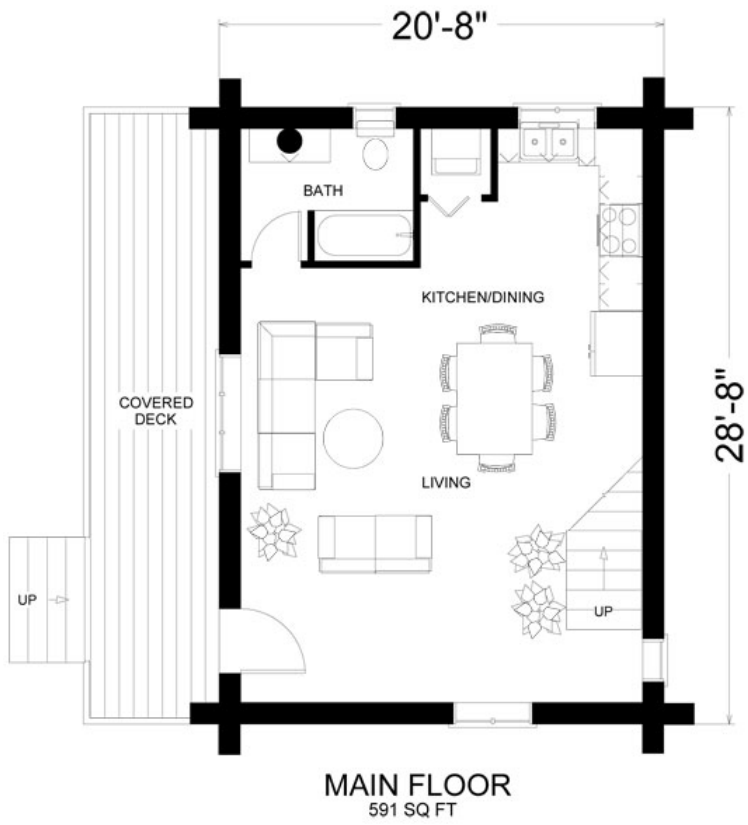
7. Log Home Plan: The Allegany

By: [Ward Cedar Log Homes](#)

The Allegany provides space beauty and charm in a comfortable floor plan perfect for families. Entry from both the porch and garage as well as a snack-bar in the kitchen offer convenience for families on the go.

The utility room and lavatory between the garage and kitchen are great places to clean up after time outdoors. On the first floor, the spacious master suite with its walk in closet and adjacent bath provide both privacy and comfort. Upstairs two bedrooms share a full bath and a catwalk runs from the gallery to the front balcony.



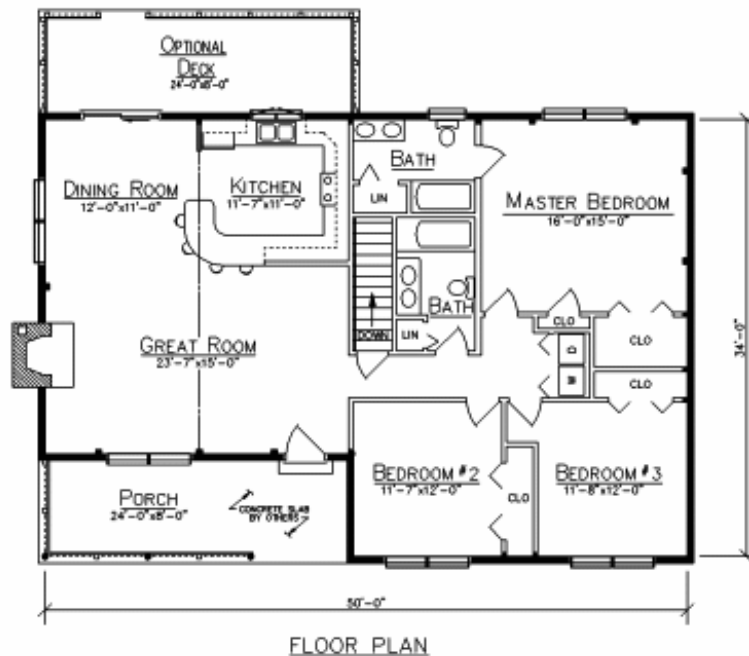


8. Log Home Plan: The Camden

By: [Ward Cedar Log Homes](#)

The Camden is a charming log home ranch with an optional deck and daylight basement. The single-level layout of this home offers ample living space while maintaining its efficient, easy-to-maintain floor plan. As you enter the home, you are greeted with a spacious great room, kitchen and dining area.

A convenient bar, great for quick meals or late night snacks, separates the kitchen from the great room. The master bedroom is tucked away at the back of the home and has its own walk-in closet and full bath. Two other bedrooms along with a full bath and laundry area complete this charming home.

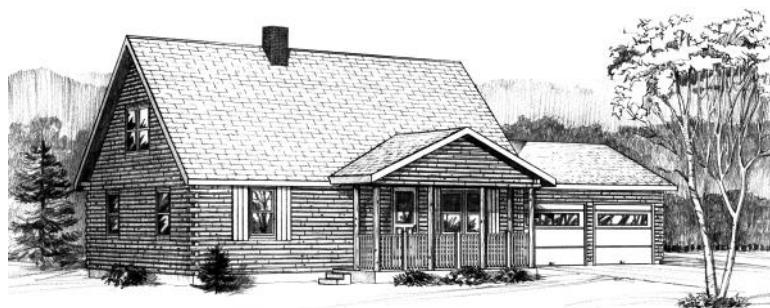


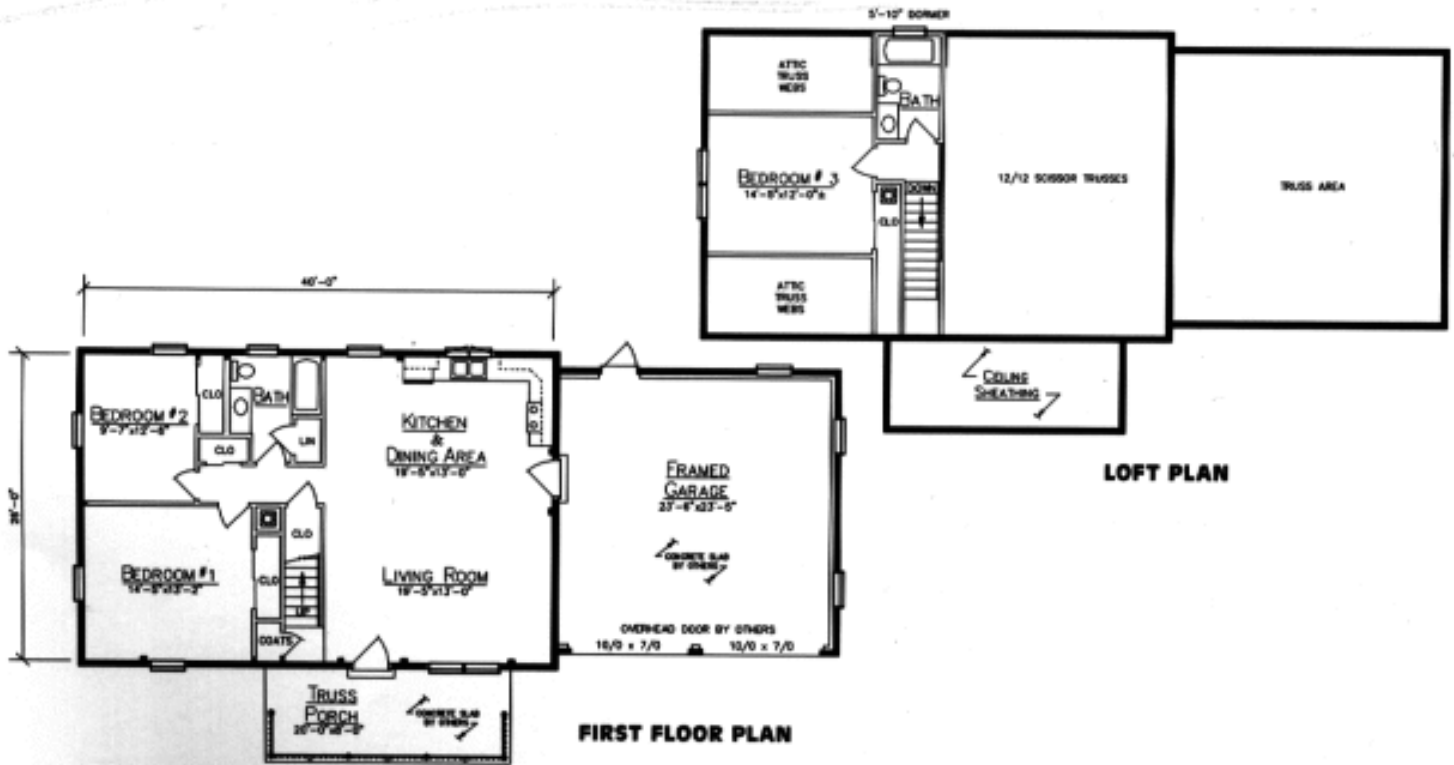
9. Log Home Plan: The Allegany

By: [Ward Cedar Log Homes](#)

The Allegany provides space beauty and charm in a comfortable floor plan perfect for families. Entry from both the porch and garage as well as a snack-bar in the kitchen offer convenience for families on the go.

The utility room and lavatory between the garage and kitchen are great places to clean up after time outdoors. On the first floor, the spacious master suite with its walk in closet and adjacent bath provide both privacy and comfort. Upstairs two bedrooms share a full bath and a catwalk runs from the gallery to the front balcony.





10. Log Home Plan: The Caribou

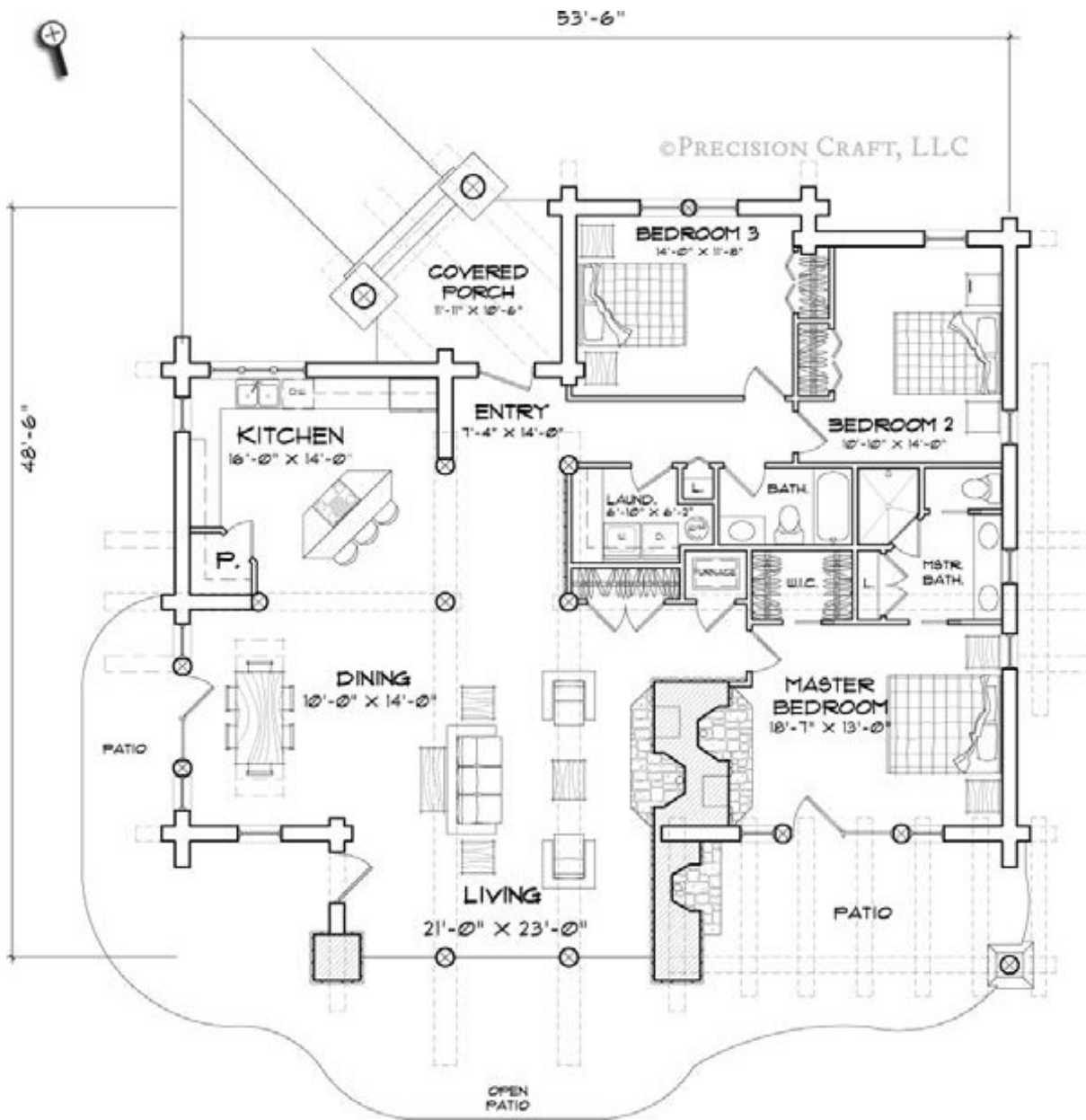
By: [PrecisionCraft Log Homes & Timber Frame](#)

As one of our most popular design concepts, the Caribou has inspired a variety of homes across the country. Work with M.T.N Design to create your own signature Caribou home.

The Caribou features:

- Handcrafted Log Single Level
- Glass Wall Accented by Character Logs





Want To Build Sheds Like These?



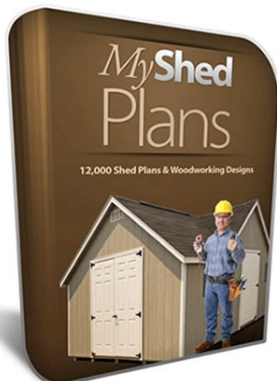
Select from a library of thousands of styles and designs!

[GET INSTANT ACCESS NOW >](#)

Free!

12,000 Shed Plans

From Small Bird Houses To
Large Outdoor Garden Sheds



Free Download

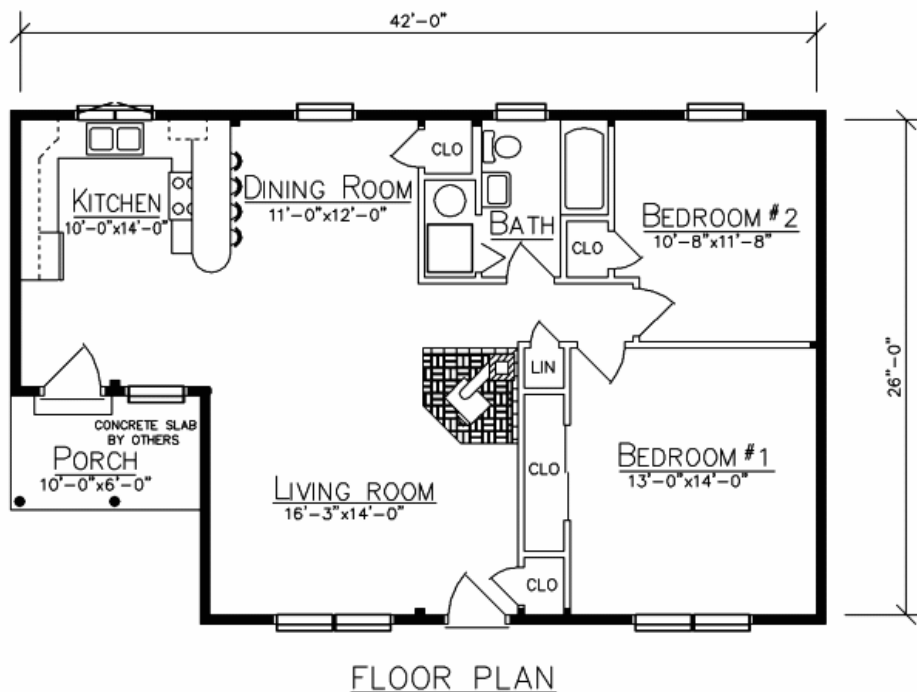
**Discover The Easiest & Fastest Way
To Start Building Remarkable Sheds**

11. Log Home Plan: The Cedar Heights

By: [Ward Cedar Log Homes](#)

This cozy, affordable home would be a perfect vacation retreat or efficient year-round home. Outside, a charming front porch functions as the entryway to the home. The all-in-one living/dining area with an attached kitchen and centrally-located wood stove creates a feeling of hospitality and warmth.

The bath also contains laundry facilities. This economy of design makes the Cedar Heights perfect for both empty nesters and first-time buyers.

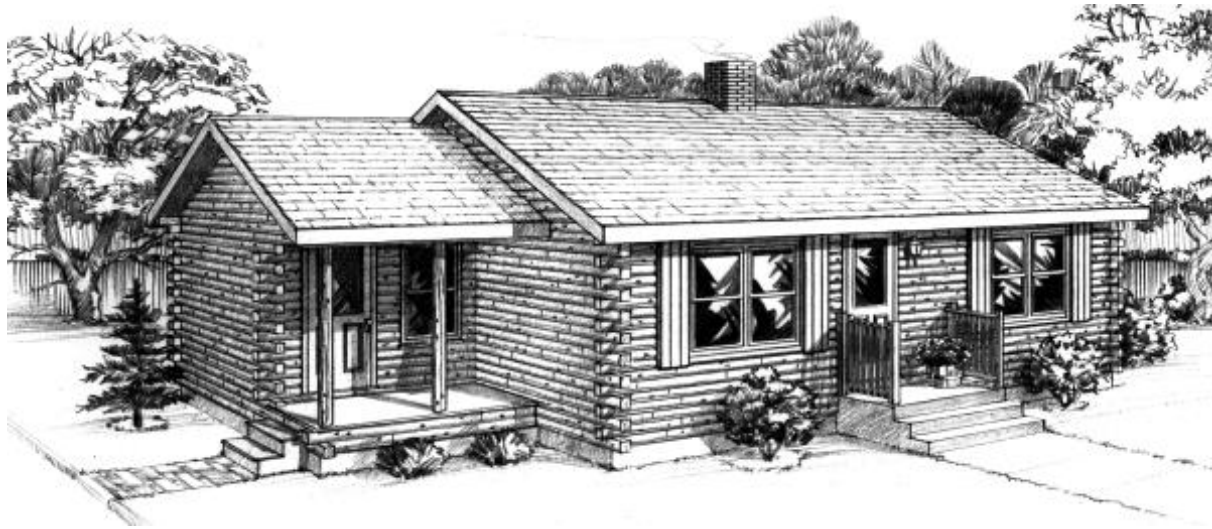


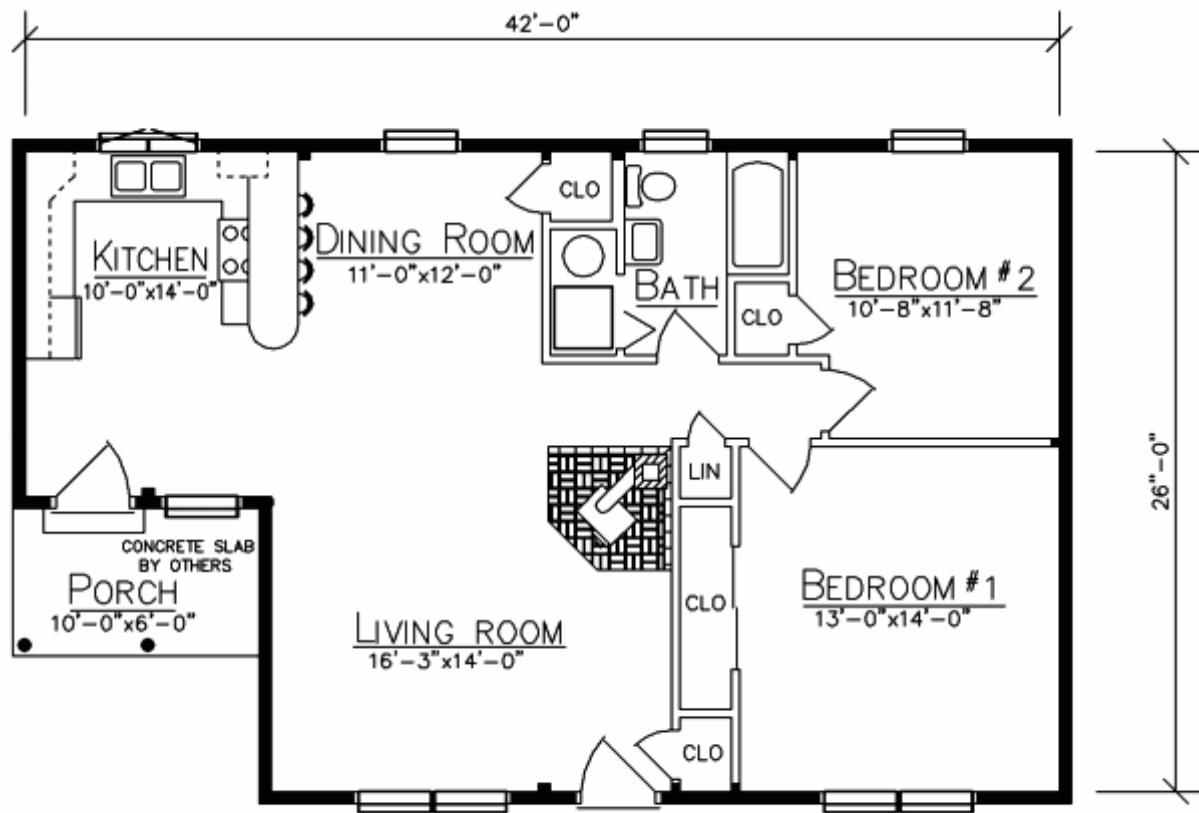
12. Log Home Plan: The Cedar Heights

By: [Ward Cedar Log Homes](#)

This cozy, affordable home would be a perfect vacation retreat or efficient year-round home. Outside, a charming front porch functions as the entryway to the home.

The all-in-one living/dining area with an attached kitchen and centrally-located wood stove creates a feeling of hospitality and warmth. The bath also contains laundry facilities. This economy of design makes the Cedar Heights perfect for both empty nesters and first-time buyers





FLOOR PLAN

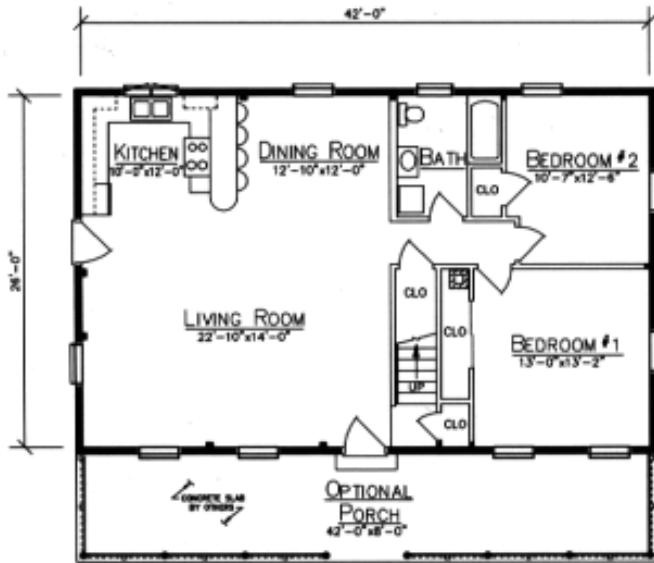
13. Log Home Plan: The Cedar Lane

By: [Ward Cedar Log Homes](#)

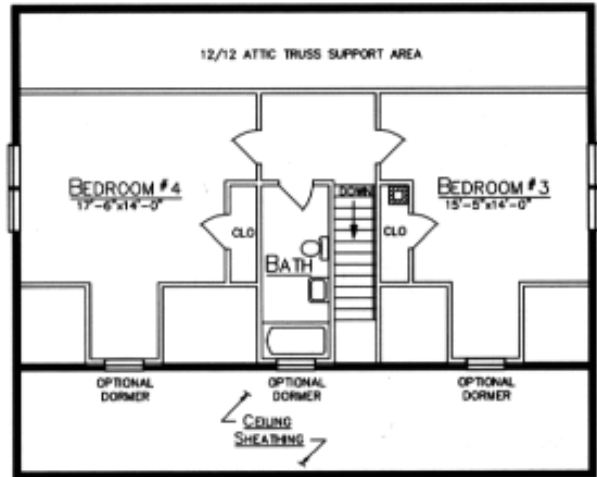
The Cedar Lane is an affordable family home that you can really make your own. Choose our optional full-length porch to create room for large family gatherings,

Inside, enjoy a spacious living room/dining room with attached kitchen, four bedrooms and two full baths. The optional dormers on the front of the home add elegance to its exterior.





FIRST FLOOR PLAN



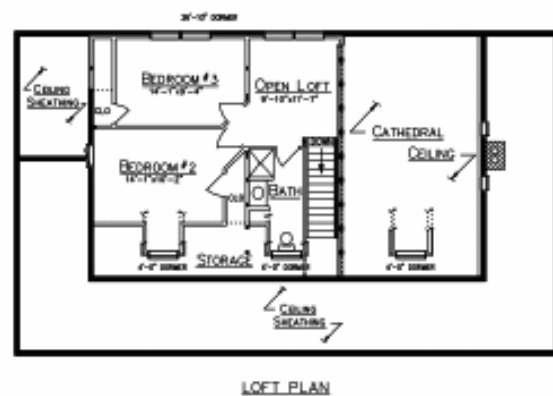
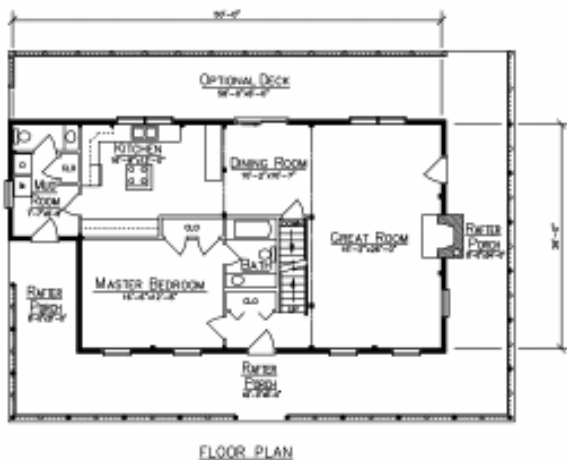
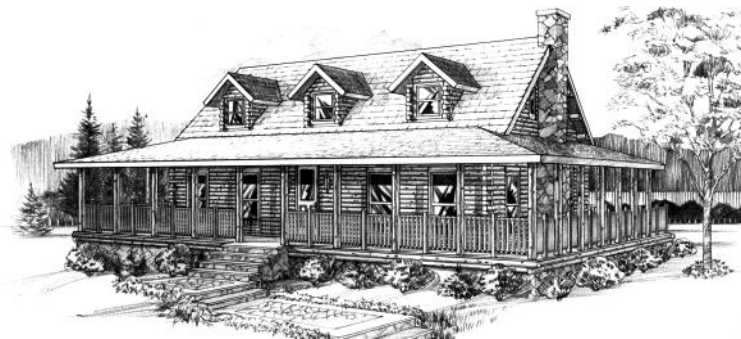
LOFT PLAN

14. Log Home Plan: The Charleston

By: [Ward Cedar Log Homes](http://WardCedarLogHomes.com)

The long, covered porches of the Charleston provide ample space for large gatherings and allow you to enjoy outdoor living. The first floor features a large great room, kitchen and dining room. A mudroom with laundry facilities and half-bath

are convenient additions for busy families. The cathedral ceiling soars to the second floor where you will find a balcony connected to an open loft, two bedrooms, and a full bath.



15. Log Home Plan: The Coopersburg

By: [Ward Cedar Log Homes](#)

Because of its traditional design, the Coopersburg would be perfect in a country setting or suburban neighborhood.

This home features a large front porch, perfect for enjoying quiet time outdoors. Its charming gables add interest to the home and offer you an opportunity to showcase architectural windows. On the first floor, the master bedroom with its full bath provides privacy and comfort.

The second floor features two bedrooms with a walk-in closet, a full bath and an open loft perfect for extra living space.



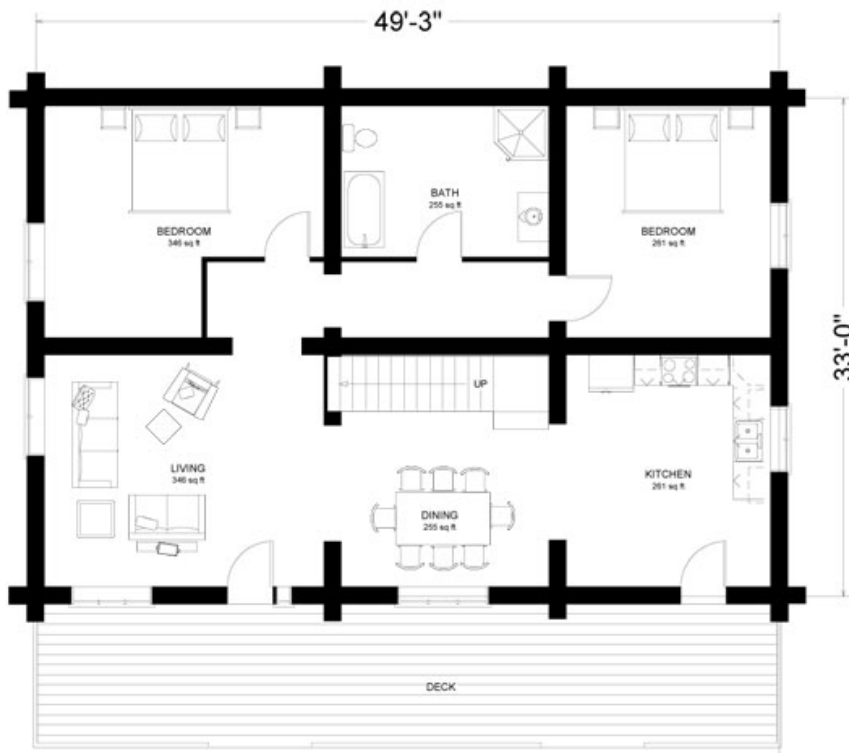
16. Log Home Plan: The Golden

By: [Big Foot Log and Timber Homes](#)

The Golden is 2,896 square feet of country charm. The four bedrooms and large living areas were designed with families in mind. On the first floor, the living room and dining area are united under a dramatic cathedral ceiling.

The large country kitchen has plenty of storage and its own entry. The light-filled loft area on the second floor can be used as a family room. Two large bedrooms, a full bath, and a storage area provide plenty of space.





MAIN FLOOR
1722 SQ FT



SECOND FLOOR
1174 SQ FT

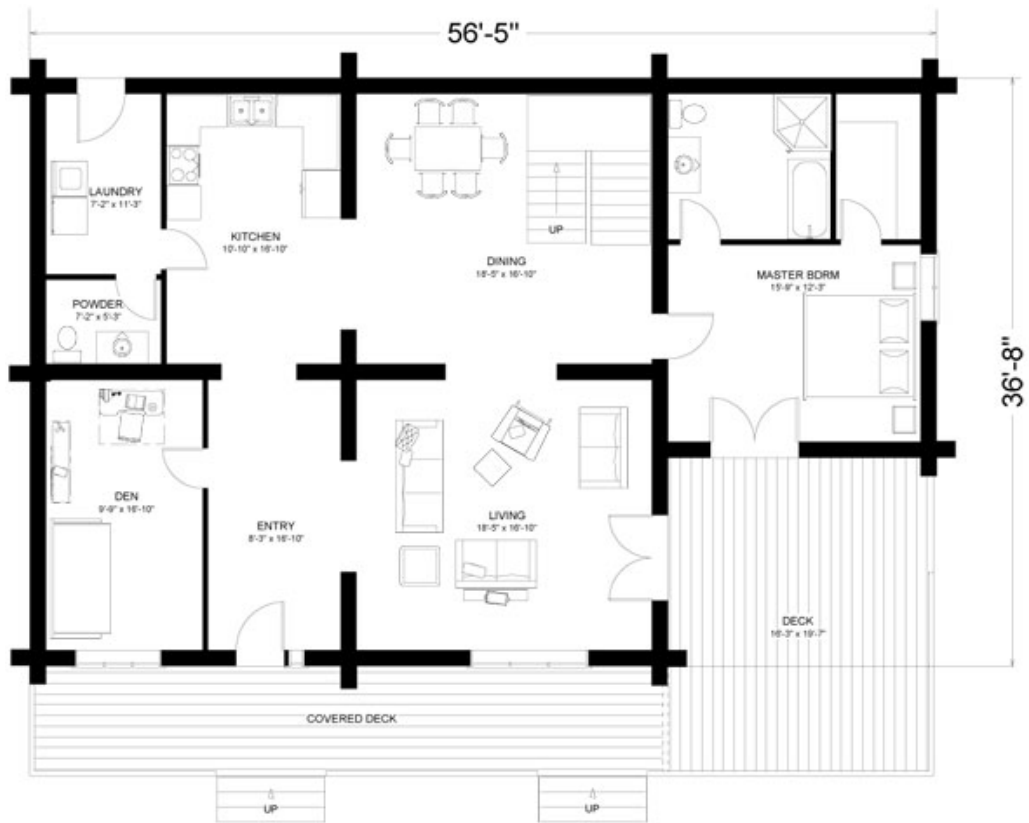
17. Log Home Plan: The Kamloops

By: [Big Foot Log and Timber Homes](#)

This dramatic chalet-style front with log ridge beams, posts and rafters sets this 2,985 square foot home apart from all the others. The first floor living spaces are generously sized.

The large wraparound porch can be accessed from the master bedroom and the living room. Open to the living area below, the second floor has an open and airy feel. The three large bedrooms and full bath provide space for family and guests. .





MAIN FLOOR
1850 SQ FT



SECOND FLOOR

1135 SQ FT

18. Log Home Plan: The Kelowna

By: [Big Foot Log and Timber Homes](#)

With four bedrooms, three baths and plenty of storage, the 2,710 square foot Kelowna combines ample living space with a distinctive country style. The master bedroom boasts a large walk-in closet and full ensuite bath.

The loft space has an additional sitting room, storage area and full bath. The massive corner fireplace brings warmth and coziness to the living area, while the generous kitchen, breakfast nook and dining area offer practical amenities.



Simple Trick Cracks The Code To Making Any DIY Project

WATCH THE VIDEO NOW:



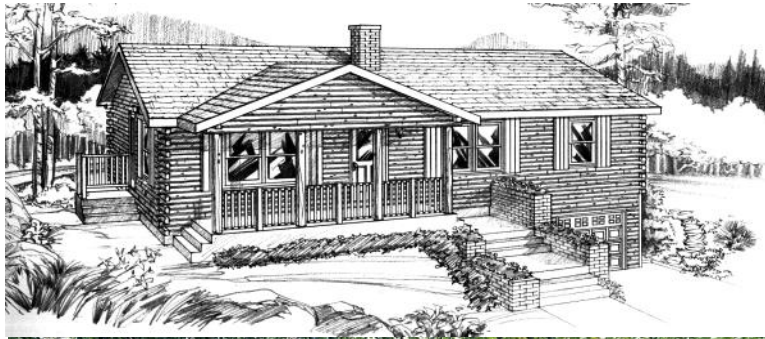
You can turn even the most daunting DIY project into reality with this magic tool.

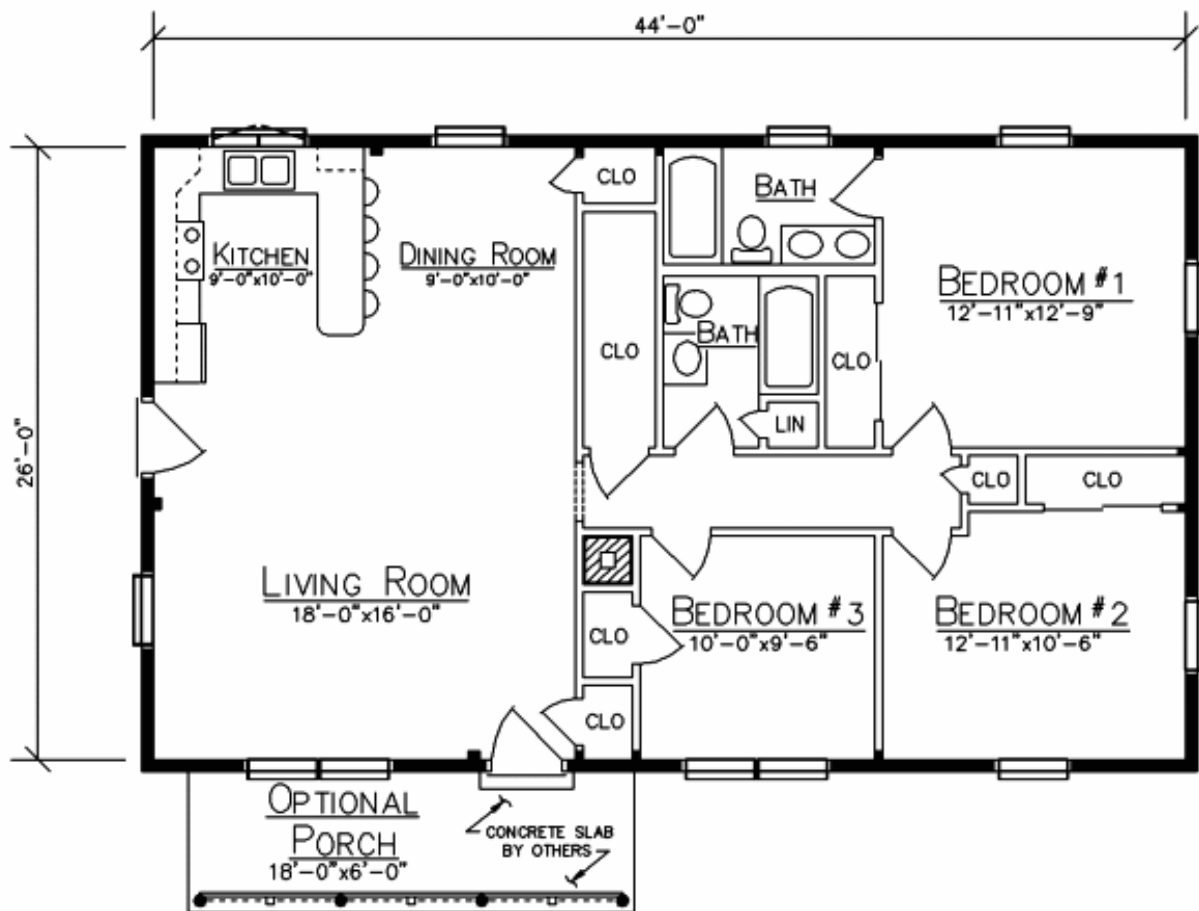
[WATCH THE MAGIC TOOL IN ACTION NOW](#)

19. Log Home Plan: The Cedar Grove

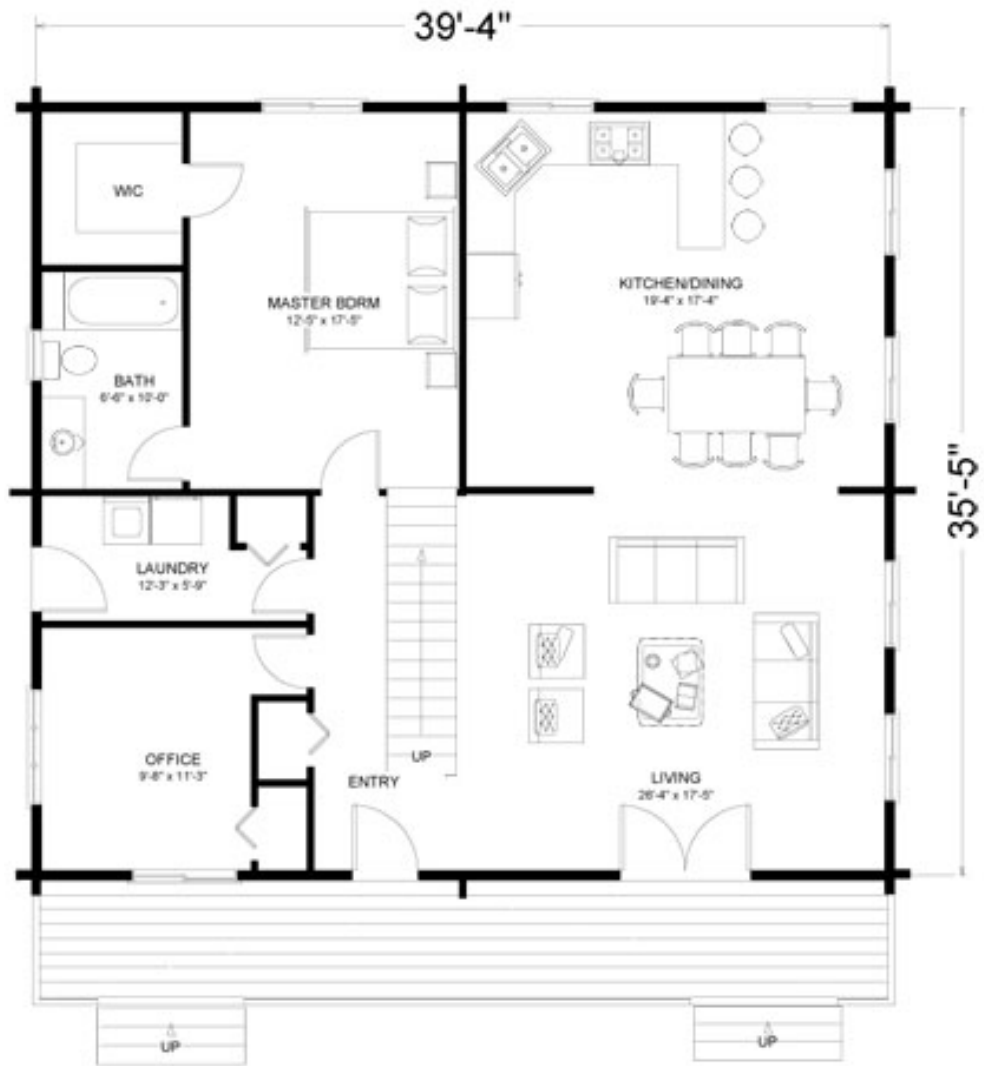
By: [Ward Cedar Log Homes](#)

The impressively-sized living and dining area greets you as you enter the Cedar Grove, all of which is connected to an efficient kitchen. An optional cathedral ceiling opens this floor plan even more, and adds to the beauty of this traditional log home. All on the convenience of a single level are the three bedrooms and two baths as well as ample closet space. The optional porch provides more space for relaxing and spending time with family and friends.





FLOOR PLAN



MAIN FLOOR
1430 SQ FT



SECOND FLOOR

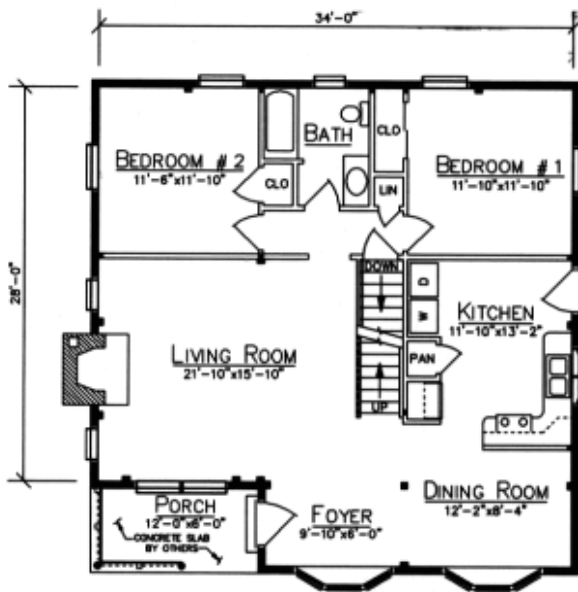
1280 SQ FT

20. Log Home Plan: The Kingswood

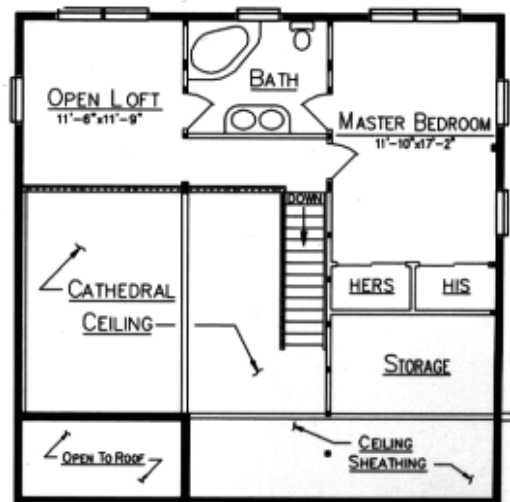
By: [Ward Cedar Log Homes](#)

Suitable for any location, the Kingswood offers a thoughtful layout. Entering the home from the cozy front porch, you'll find an impressively open living/dining room area with a cathedral ceiling and convenient kitchen.

Two bedrooms, a full bath and laundry facilities round out the first floor plan. The spacious master bedroom, complete with deluxe master bath and his and hers walk-in closets, occupies much of the second floor.



FIRST FLOOR PLAN



LOFT PLAN

21. Log Home Plan: The Lafayette

By: [PrecisionCraft Log Homes & Timber Frame](#)

The Lafayette is a log home designed for people who prefer a less open floor plan. Although open, the kitchen is visually separated from the great room and formal dining area. The master suite is also secluded.

Design Features:

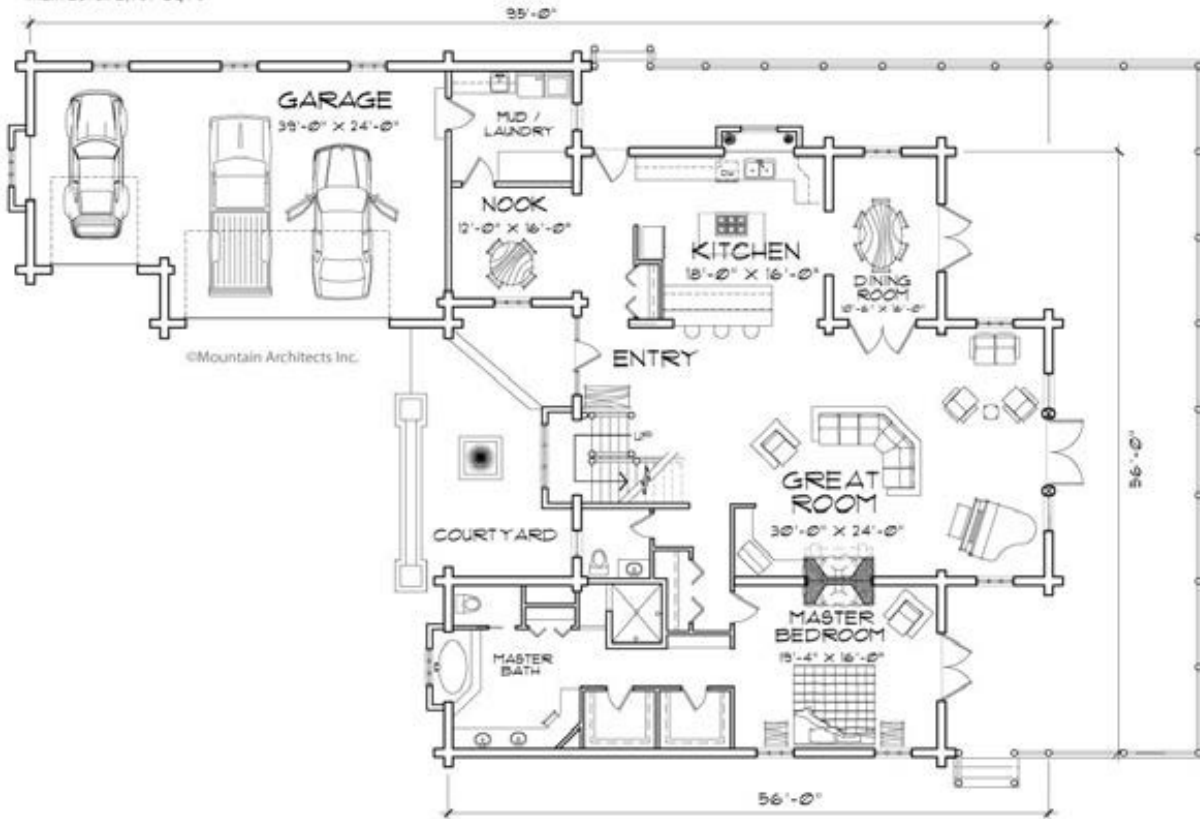
- Milled log home design featuring eyebrow dormers Arched, log accented windows
- Entry courtyard



Lafayette

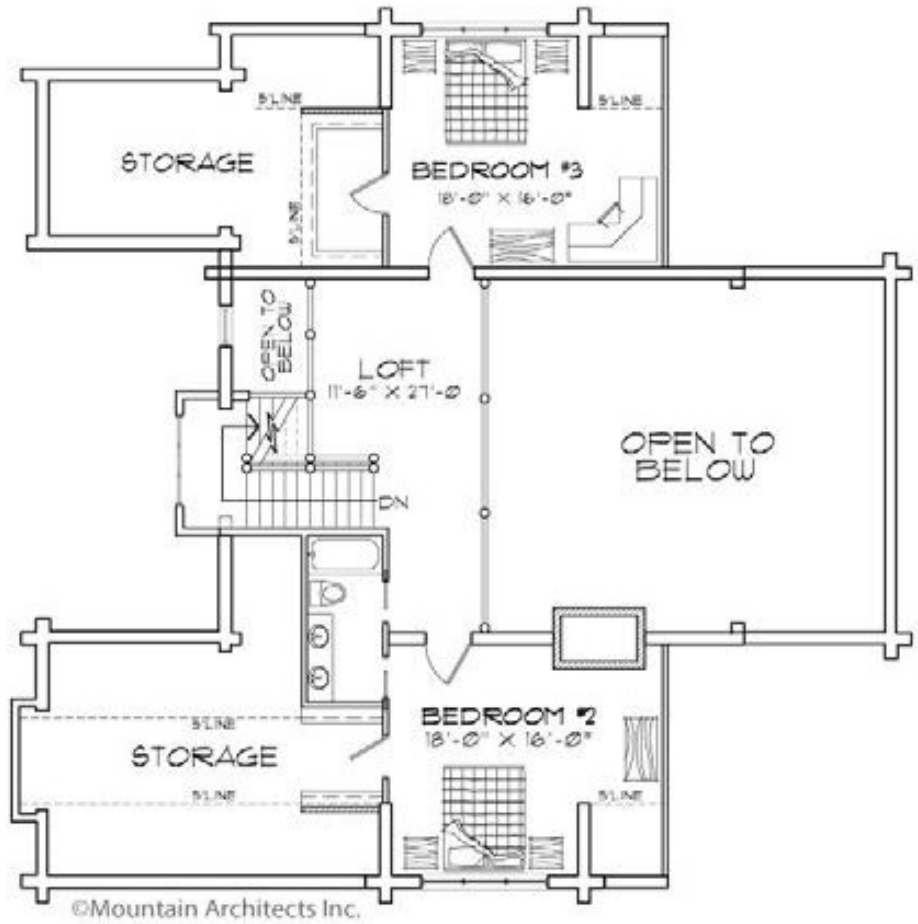
Area: 3,784 Sq Ft

Main Level: 2,787 Sq Ft





Lafayette
Area: 3,784 Sq Ft
Second Level: 1,017 Sq Ft



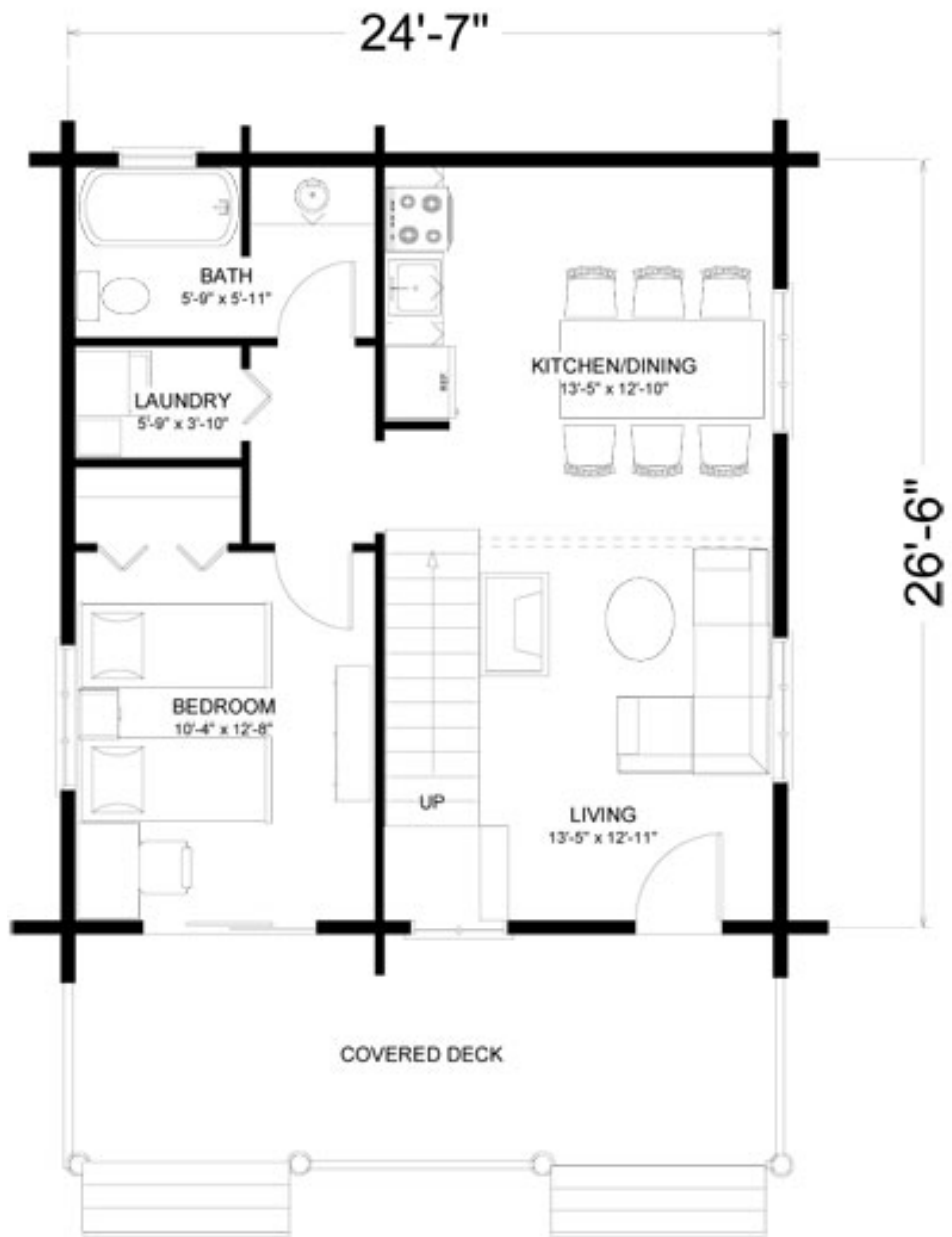
22. Log Home Plan: The Leavitt

By: [Big Foot Log and Timber Homes](#)

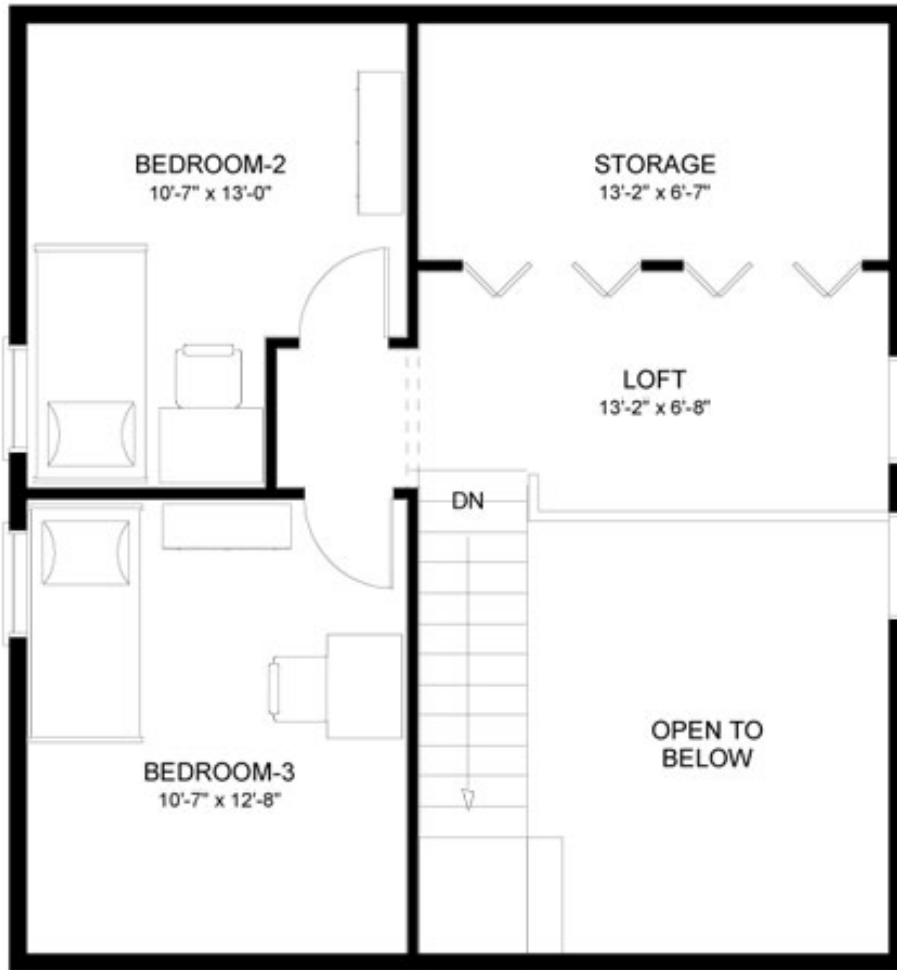
At just under 1,087 square feet and featuring an American porch facade, the Leavitt is perfect for either weekend getaways for gracious, country retirement living.

Upstairs skylights flood two bedrooms with light, and there is plenty of closet space, which makes this home extremely livable. On the ground floor, a cathedral ceiling creates large, open living and dining areas. From the private master bedroom, a patio door opens directly onto the deck.





MAIN FLOOR
680 SQ FT



SECOND FLOOR

407 SQ FT

Get The \$90,000 Per Year Home Woodworking Business Blueprint

Download Jim's \$90,000 per year home woodworking business blueprint below and learn [how to start and operate a successful home woodworking business!](#)



Turn Your Passion Into Profits!

It is a no-fluff step by step guide to create a part-time woodworking business, selling easy-to-build wood crafts, from HOME ...with **NO capital or experience required.**

Get Access Now!

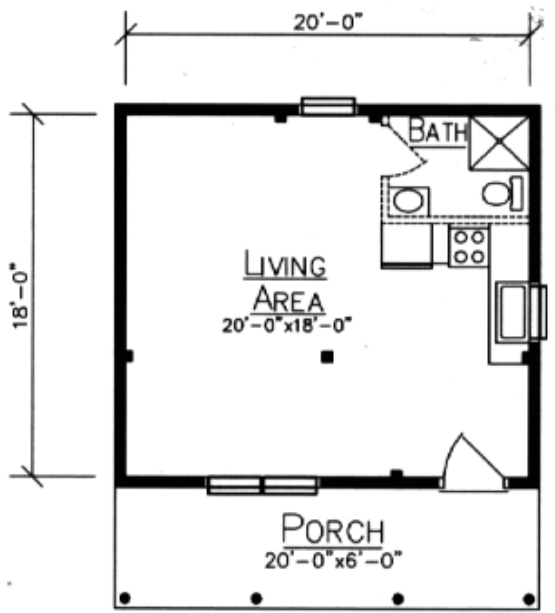
23. Log Home Plan: The Lexington

By: [Ward Cedar Log Homes](#)

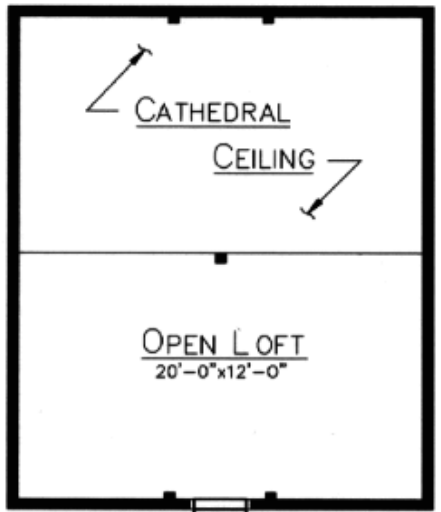
The optional rafter porch gives the Lexington a traditional log home feel, while its comfortable floor plan is designed for contemporary living. The spacious living room with cathedral ceiling is open to the kitchen and dining room, giving the home an inviting atmosphere while maintaining efficiency.

The two bedrooms located on the first floor share a full bath with ample closet space. The second floor is dominated by a large master bedroom, full bath and plenty of storage space.





MATAGAMON FIRST FLOOR PLAN



MATAGAMON LOFT PLAN

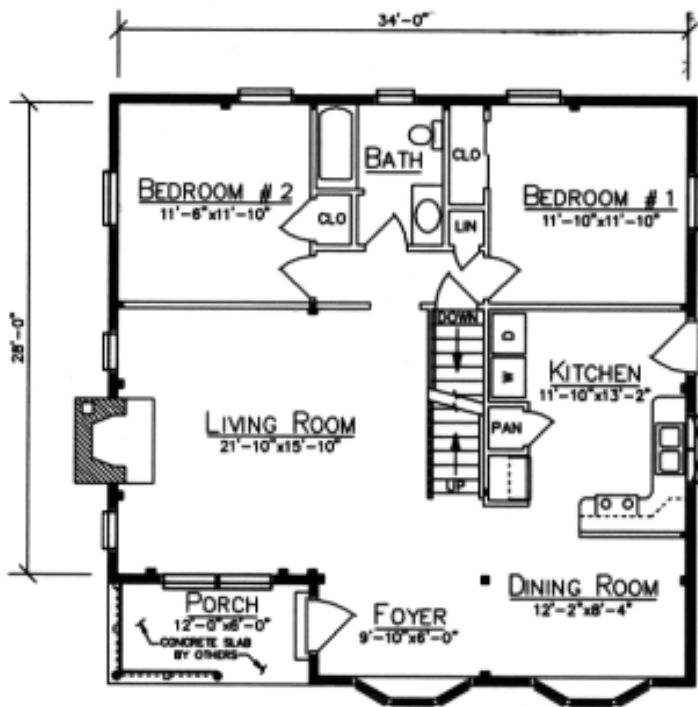
24. Log Home Plan: The Matagamon

By: [Ward Cedar Log Homes](#)

Our charming camps will provide you with the perfect place to relax, unwind, and leave your troubles behind. Ideal for the lake, the mountains, even the ocean, building one of our Camp Series cabins will give you the ultimate weekend and vacation getaway.

All of the camp designs have open floor plans and sleeping lofts, suggesting a return to the simple life". The Baskahegan and Matagamon's sleeping lofts extend out over the porch for even more space, while the Telos and the Musquash offer larger front porches so you can spend as much time as possible enjoying the outdoors.





FIRST FLOOR PLAN



LOFT PLAN

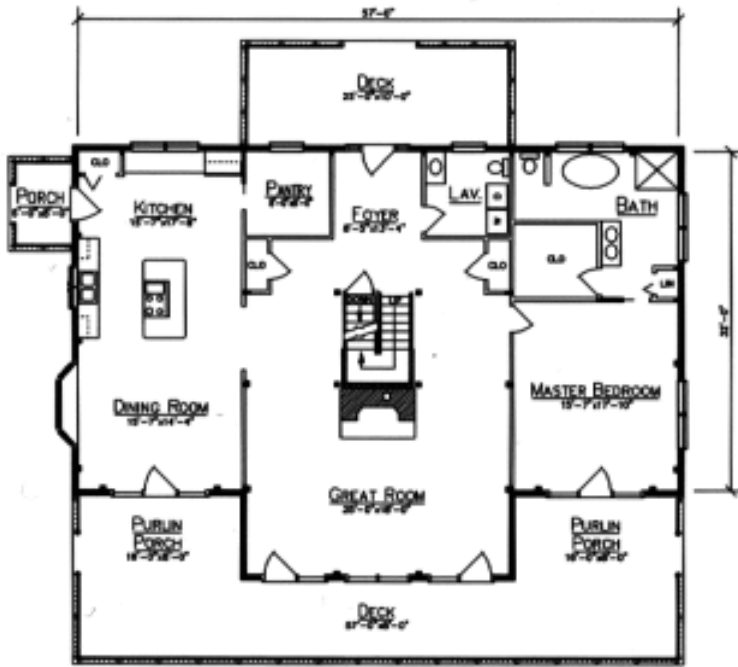
25. Log Home Plan: The Savannah

By: [Ward Cedar Log Homes](#)

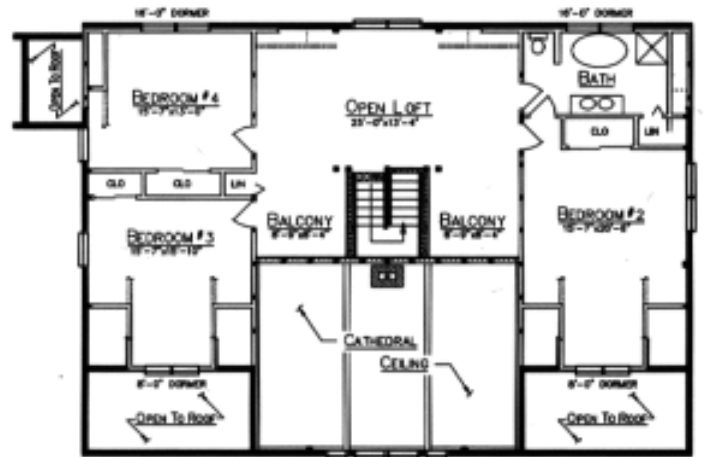
Come home to grand style when you live in the gracious beauty of the Savannah. Beautifully designed for family living while still offering private spaces, the Savannah boasts four bedrooms, two large full baths and an additional washroom on the first floor.

The spacious kitchen is open to the dining room and also offers a pantry hidden behind a pocket door for storing all those extras out of site. Families will love the cathedral ceiling great room that opens onto a large front deck.





FIRST FLOOR PLAN



LOFT PLAN

26. Log Home Plan: The Seymour

By: [Big Foot Log and Timber Homes](#)

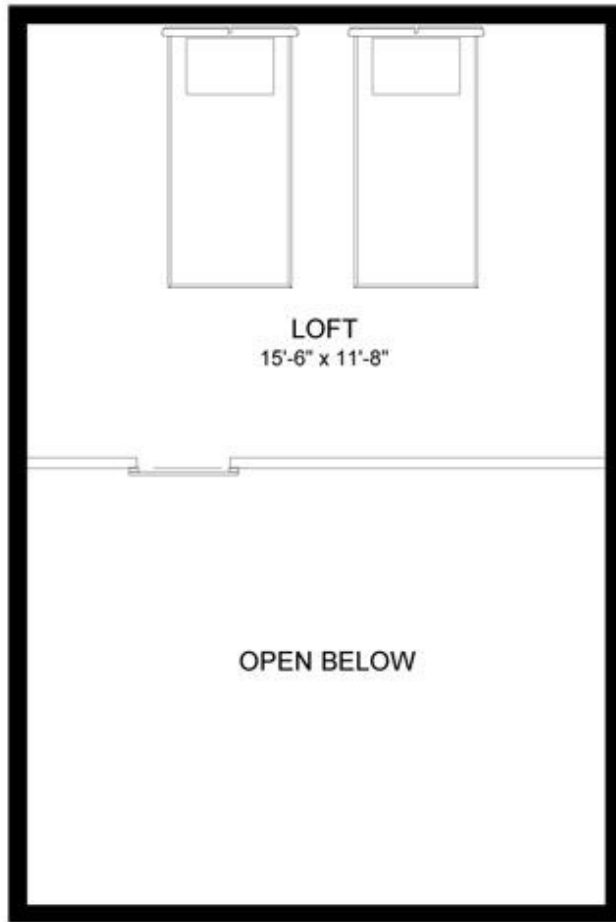
At 606 square feet, the Seymour is the perfect backyard getaway for the city dweller: minimal upkeep combined with an open loft floor plan. Every inch of this practical floor plan is used effectively.

The first floor provides all the necessary living spaces: kitchen, dining, bath and bedroom. The second floor loft area can be adapted to suit your needs. Use it as an extra bedroom, an office or just for storage.





MAIN FLOOR
406 SQ FT



LOFT
15'-6" x 11'-8"

OPEN BELOW

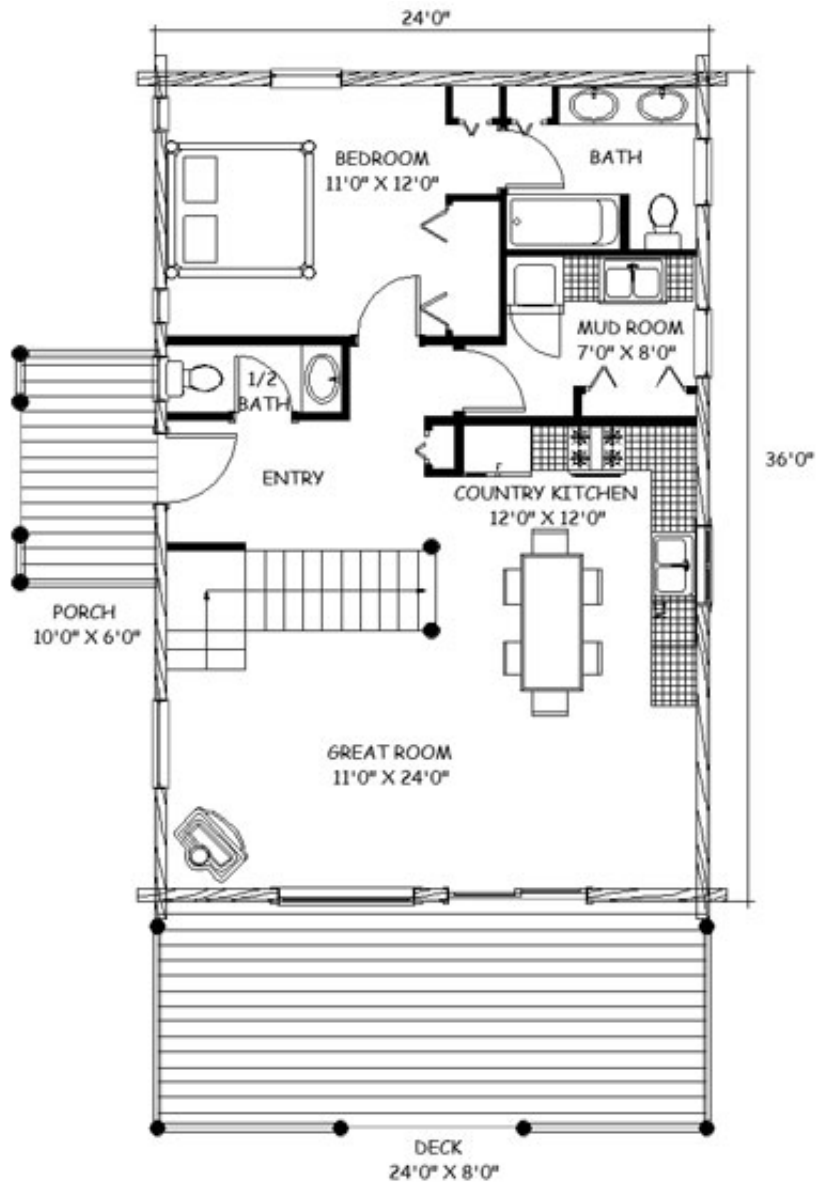
SECOND FLOOR
200 SQ FT

27. Log Home Plan: The Snowdonia

By: [Big Foot Log and Timber Homes](#)

Alpine charm abounds in the Snowdonia, a 1,284 sq. ft. home with a flexible floor plan that is easily customizable. The first floor could be rearranged to suit your needs -- maybe a classic kitchen with separate dining room?

Or would you prefer the cozy feel of a country kitchen? The comfortable great room takes advantage of scenic views, while the main floor master bedroom with ensuite bathroom offers privacy. Two more bedrooms and a generous loft round out the second floor, which also includes lots of storage space.



MAIN FLOOR: 864 SQ. FT.

B:



MAIN FLOOR: 864 SQ. FT.



LOFT: 420 SQ. FT.

28. Log Home Plan: The Sorrento

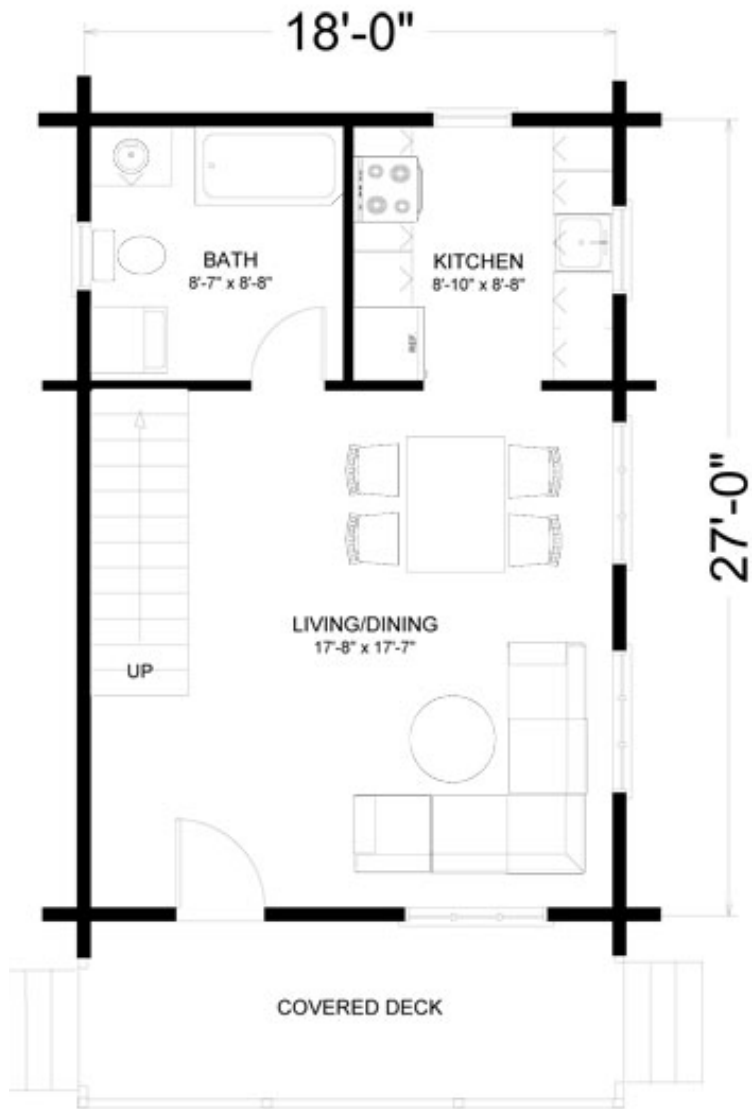
By: [Big Foot Log and Timber Homes](#)

The Sorrento is a charming and practical cottage, perfect for a weekend retreat. The 744 square foot open floor plan offers maximum usage of space with country style.

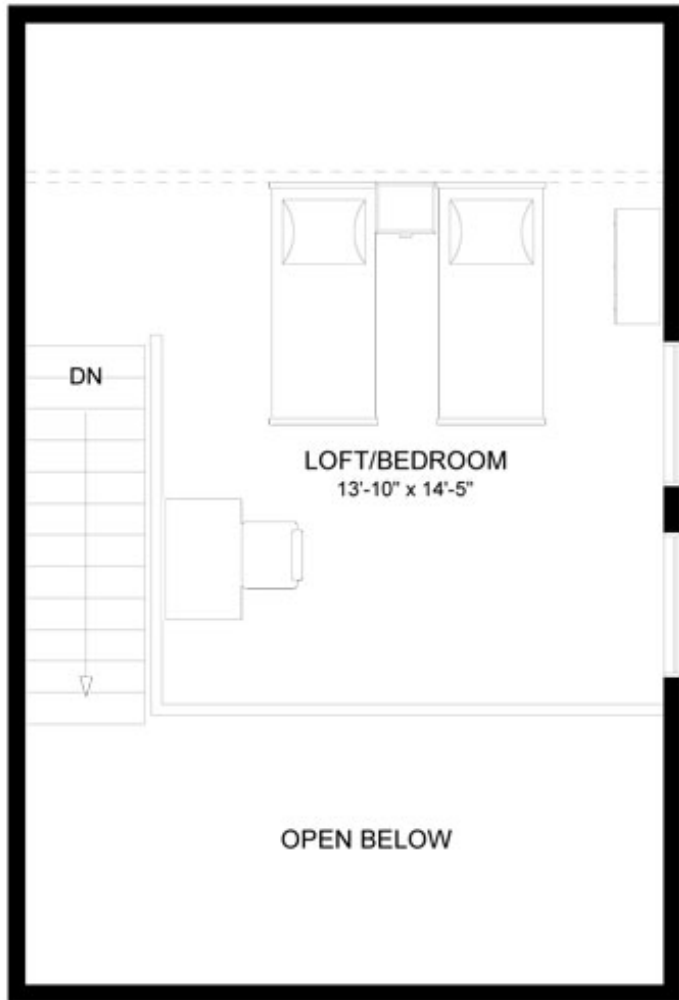
The first floor contains the kitchen, living room and dining area as well as a full bath. The covered front porch can be used year-round. The second floor features an ample bedroom and separate storage area. The open loft area can be used as an extra bedroom.







MAIN FLOOR
514 SQ FT



SECOND FLOOR
230 SQ FT

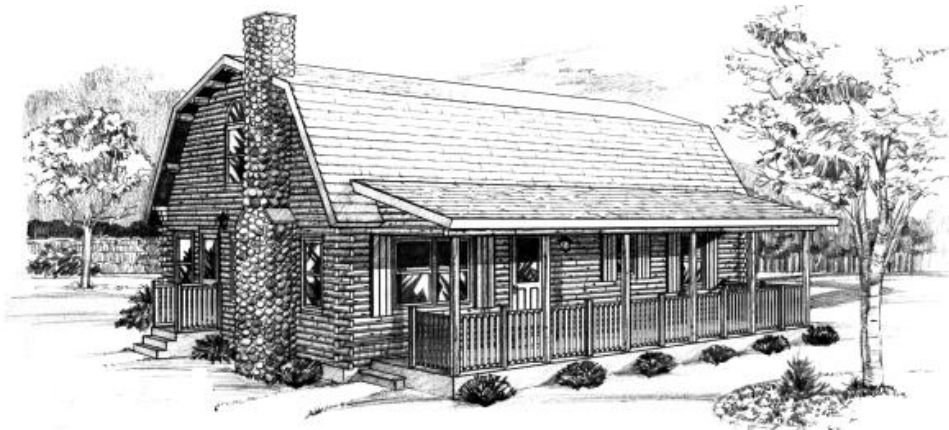
29. Log Home Plan: The Stillwater

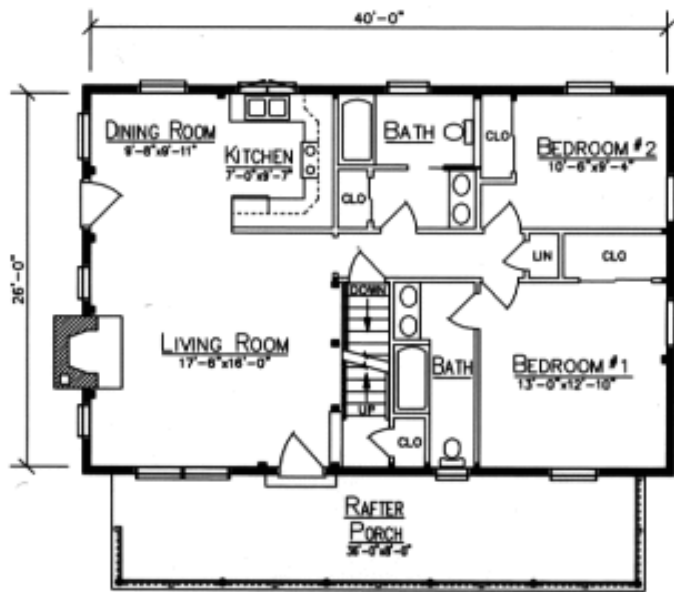
By: [Ward Cedar Log Homes](#)

The front porch the Stillwater provides a great place to enjoy the scenery of the outdoors, and its comfortable interior design offers wonderful space to enjoy the company of family and friends.

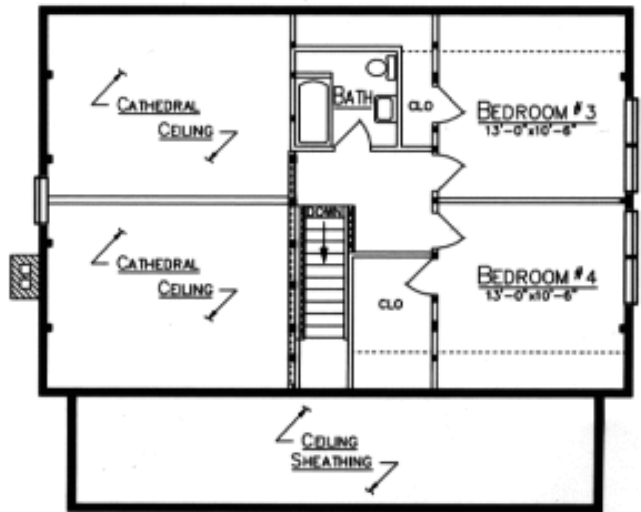
The living room, dining room and kitchen all share the spacious beauty of the gambrel cathedral ceiling. The master suite along with a second bedroom or office complete the first floor plan.

On the second floor, the third and fourth bedrooms offer an adjoining walk-in closet and full bath.





FIRST FLOOR PLAN



LOFT PLAN

30. Log Home Plan: The Truckee

By: [PrecisionCraft Log Homes & Timber Frame](#)

The Truckee design is a rustic mixture of large handcrafted logs, stone and vertical siding. Post and beam construction provides the grandeur of handcrafted logs without overpowering the small cabin.

Design Features:

- Single-level log home cabin design Handcrafted post & beam construction
- Rustic mixture of large handcrafted logs, stone and vertical siding



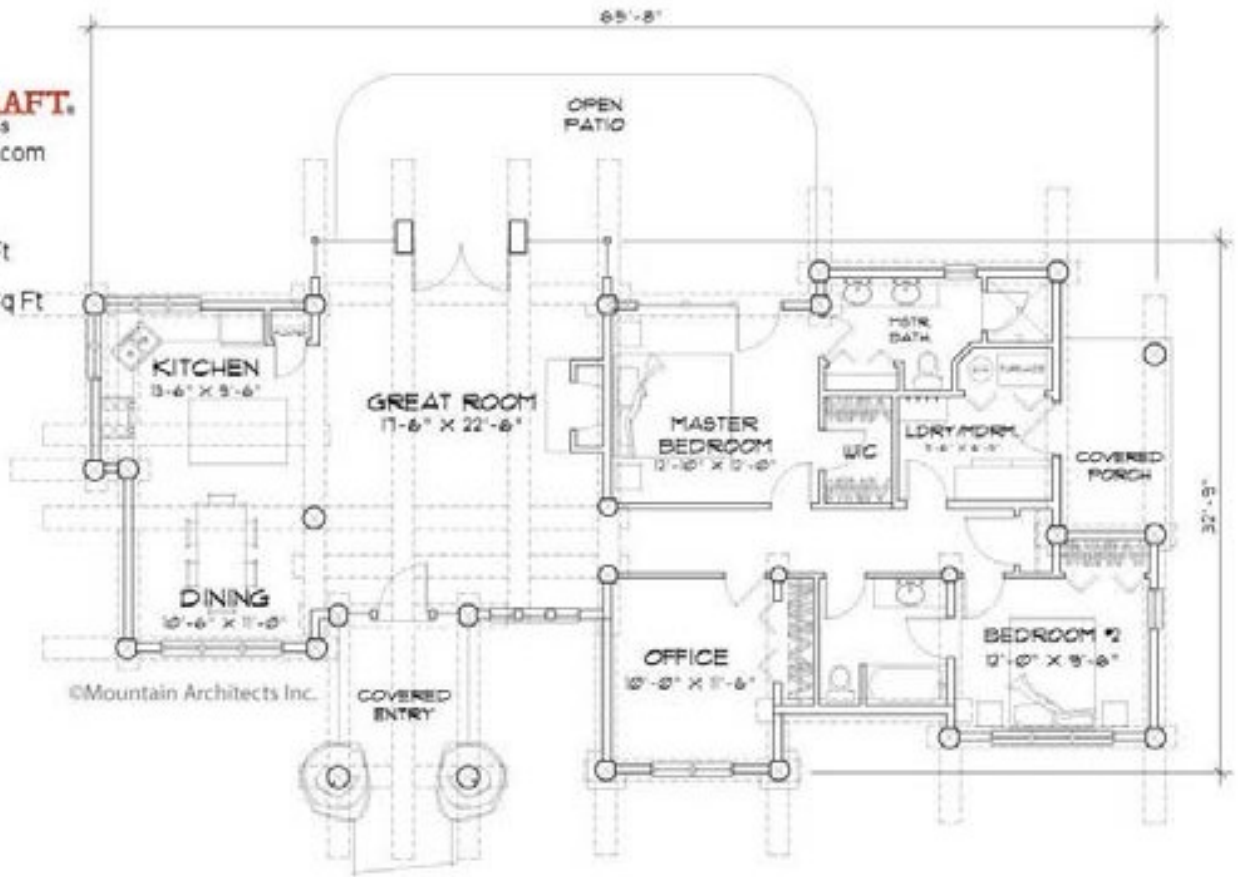


PRECISIONCRAFT.
LOG & TIMBER HOMES
www.precisioncraft.com

Truckee

Area: 1,565 Sq Ft

Main Level: 1,565 Sq Ft



©Mountain Architects Inc.

Download 16,000 Woodworking Plans

This is a collection of [16,000 woodworking plans](#) (the worlds largest collection available online or anywhere else).

From decks, to sheds, to furniture and crafts, to chairs & tables, to file cabinets and more. This is the handyman woodworkers dream collection.



16,000 Woodworking Projects

- ✓ Decks
- ✓ Sheds
- ✓ Greenhouses
- ✓ Chairs & Tables
- ✓ File Cabinets
- ✓ And Much More!

#1 Woodworking Resource

Download Now!



Thousands of Ideas For Your Next Project!



31. Log Home Plan: The Upland Retreat

By: [PrecisionCraft Log Homes & Timber Frame](#)

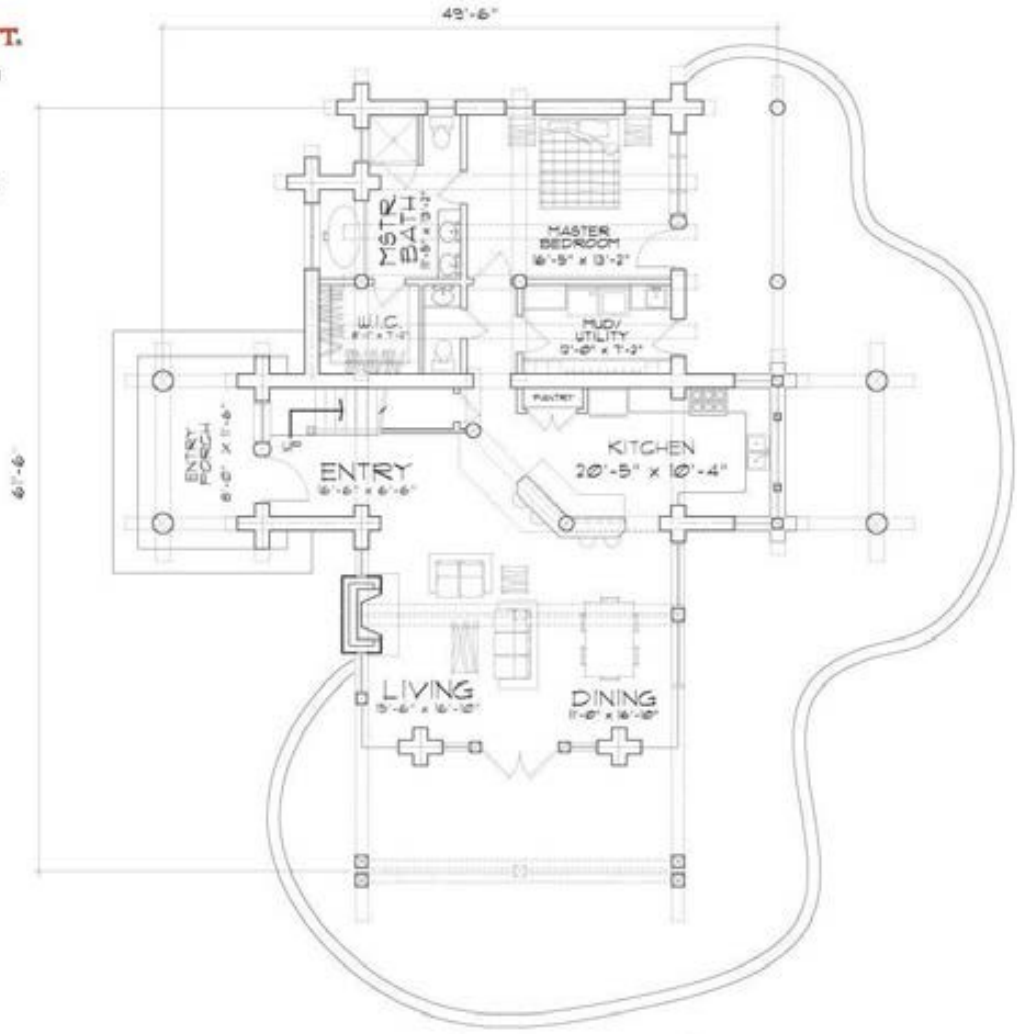
The design of the Upland Retreat is like no other. Its modern, rustic look features handcrafted logs, timber frame trusses, copper roofing, stone and seamless corner glass windows in the great room.

Design Features:

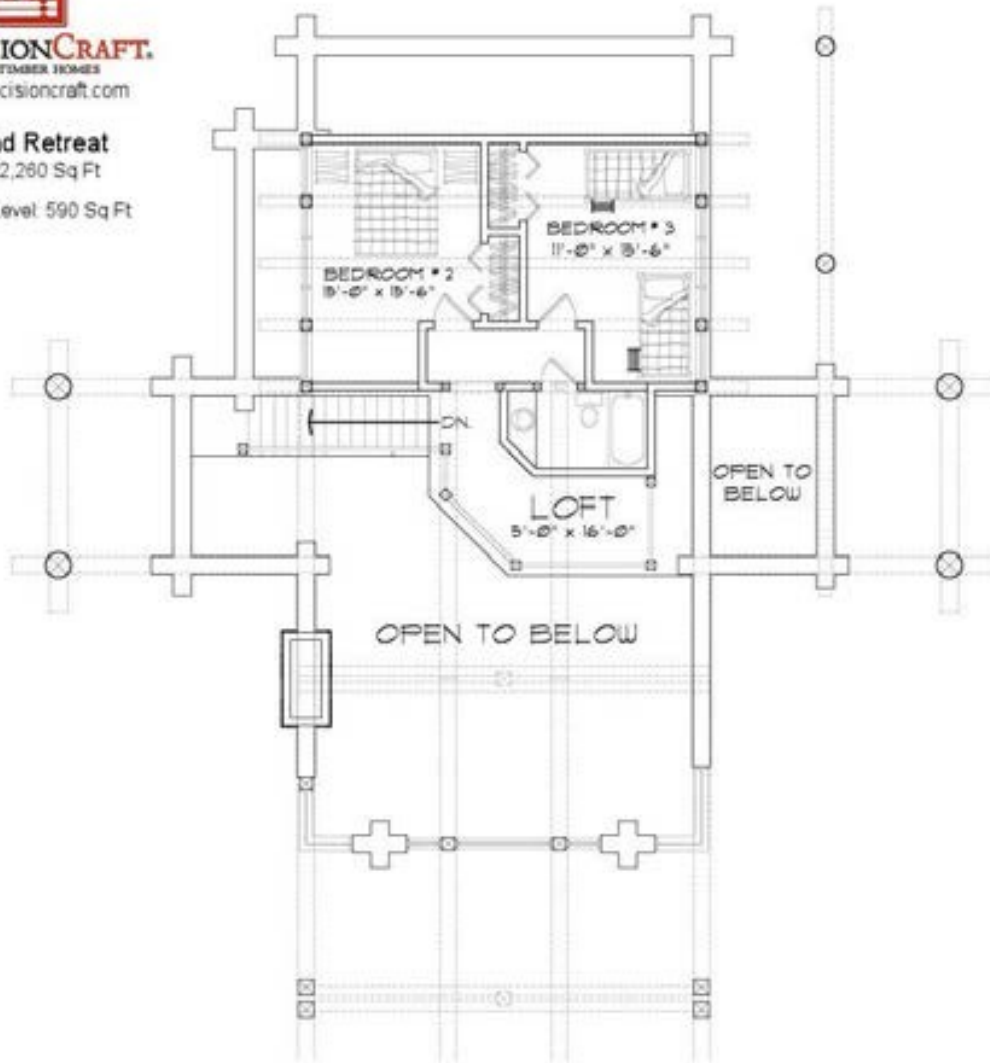
- Blend of timber frame & handcrafted log wall Modern, rustic design
- Seamless corner windows in great room



Upland Retreat
Area: 2,280 Sq Ft
Main Level: 1,670 Sq Ft



Upland Retreat
Area: 2,260 Sq Ft
Second Level: 590 Sq Ft



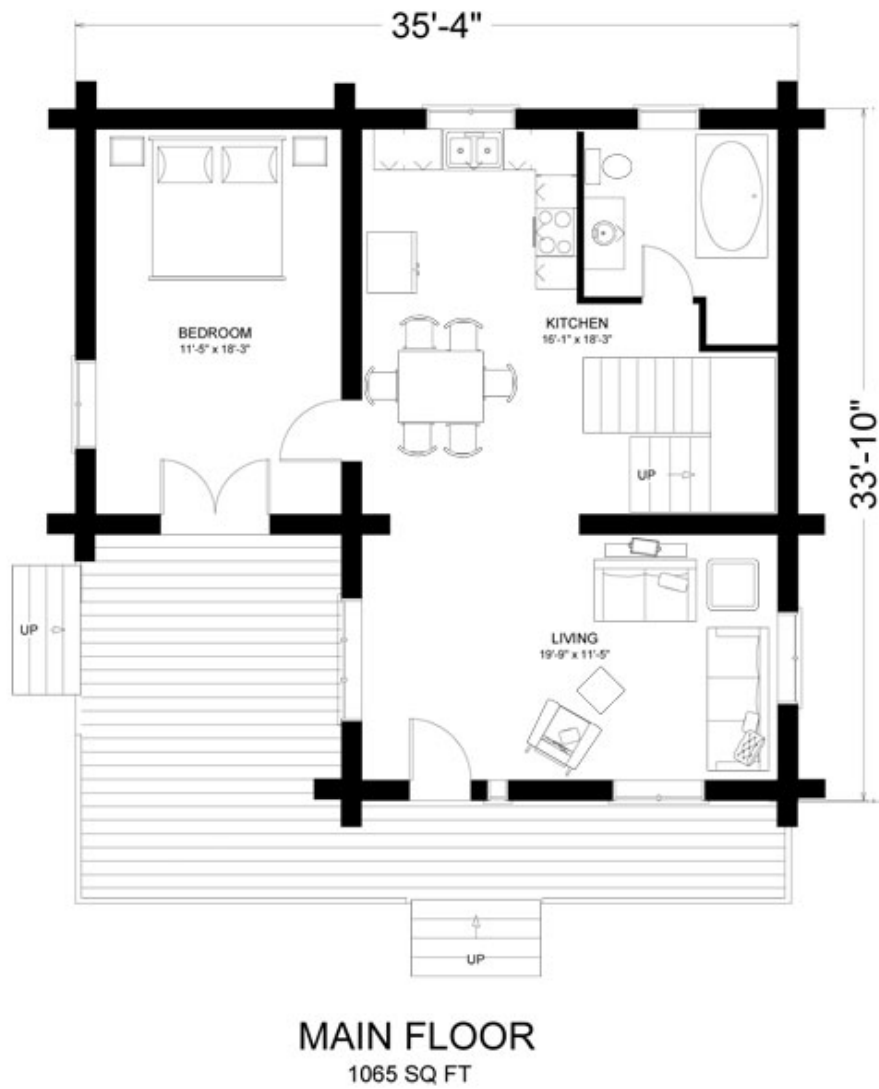
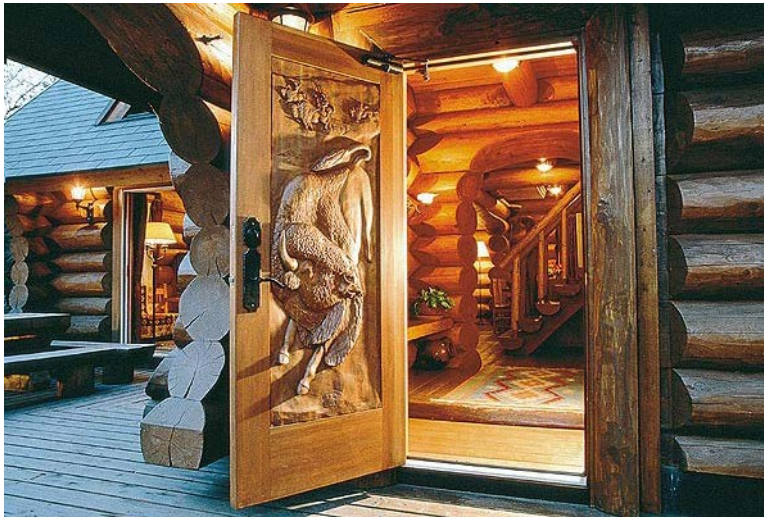
32. Log Home Plan: The Vernon

By: [Big Foot Log and Timber Homes](#)

At just 1,800 square feet, the three bedroom Vernon log home features a dramatic roofline and a large L-shaped deck. Upstairs, two bedrooms and a loft offer an alternative living space graced by a glassed gable wall and numerous windows.

On the main floor, a vaulted ceiling creates a bright, spacious living area, while the master bedroom (with walk-in closet) is private and cozy.







SECOND FLOOR
735 SQ FT

33. Log Home Plan: The Woodhaven

By: [PrecisionCraft Log Homes & Timber Frame](#)

An architectural highlight of the Woodhaven design is the use of custom log crossbracing in the window features at both the entry and great room. These crossbraces create openings for the trapezoidal windows.

Design Features:

- Entry window with custom log bracing
- Stone accents and supports
- Copper windows accents



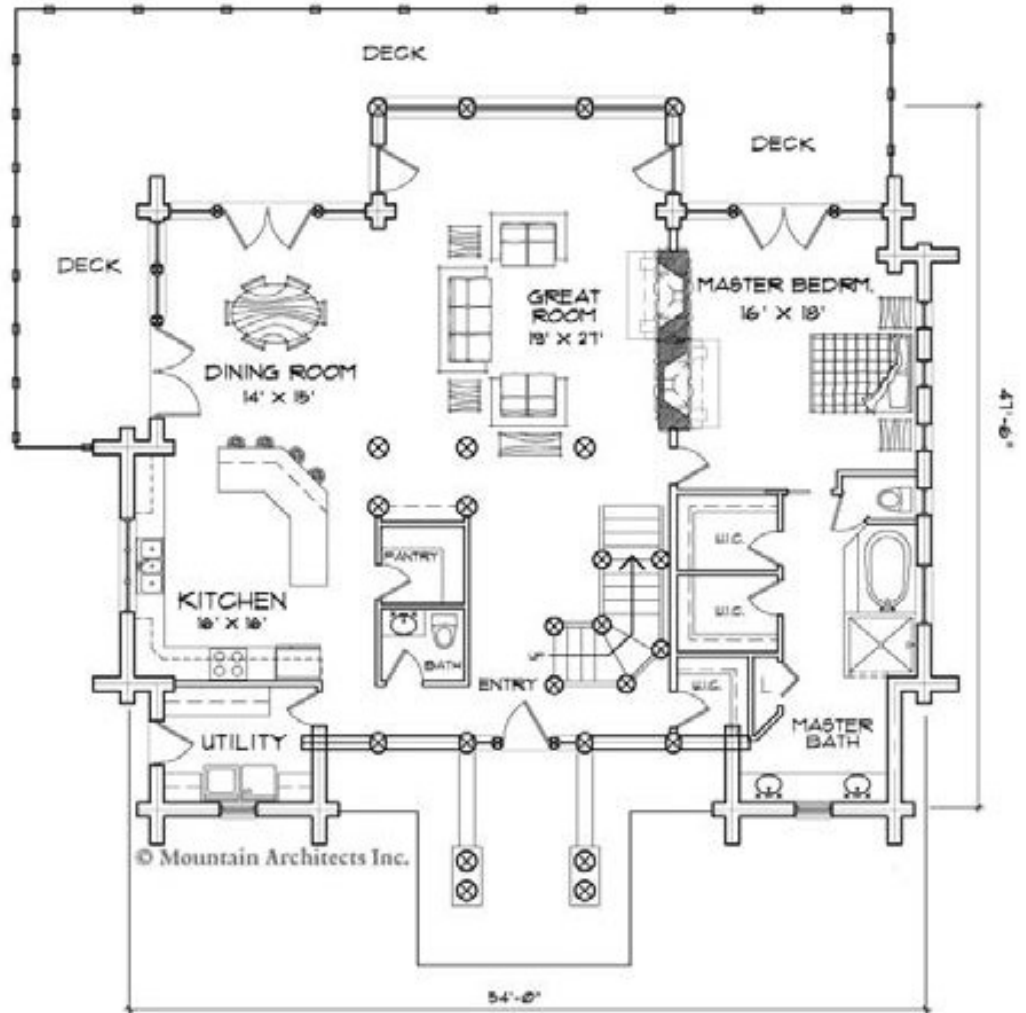


PRECISIONCRAFT.
LOG & TIMBER HOMES
www.precisioncraft.com

Woodhaven

Area: 3,257 Sq Ft

Main Level: 2,197 Sq Ft



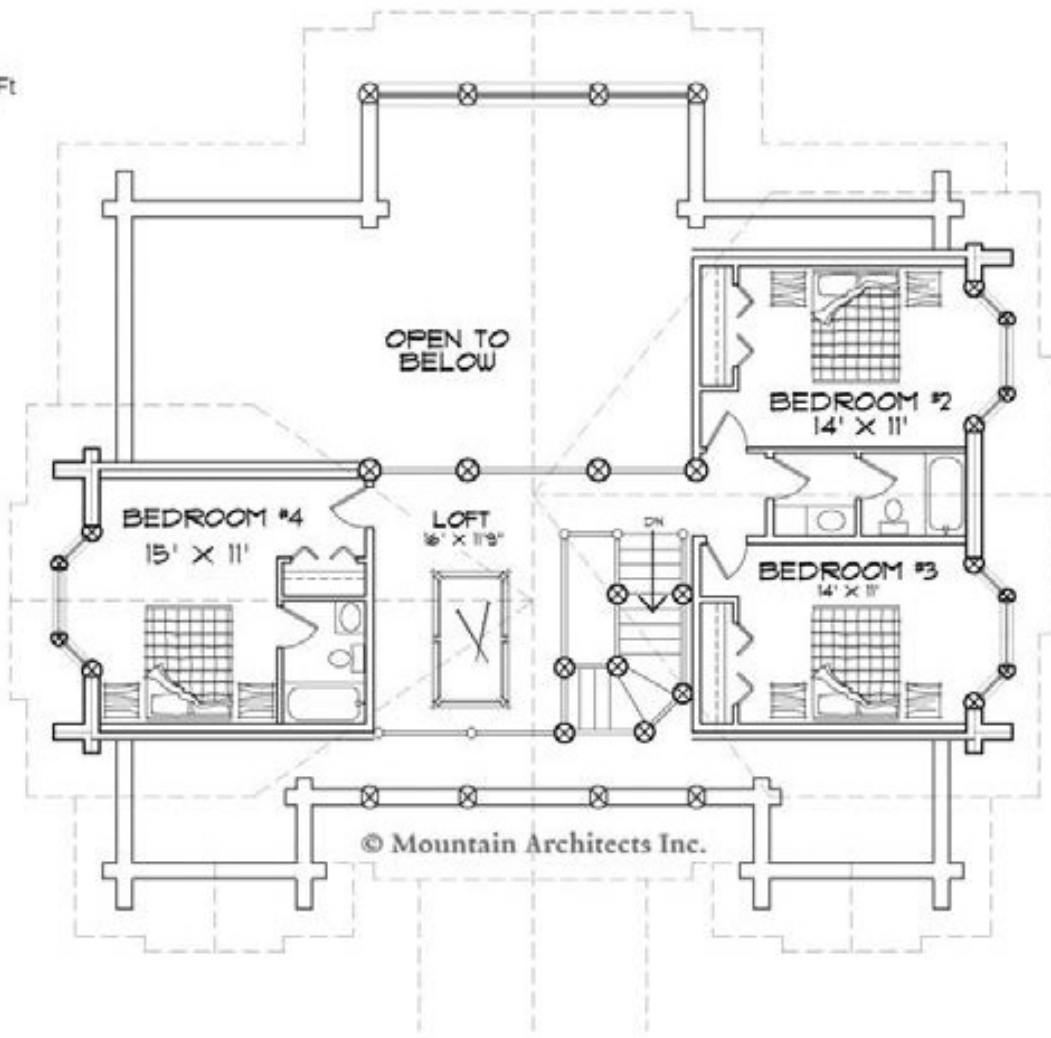


PRECISIONCRAFT.
LOG & TIMBER HOMES
www.precisioncraft.com

Woodhaven

Area: 3,257 Sq Ft

Second Level: 1,060 Sq Ft



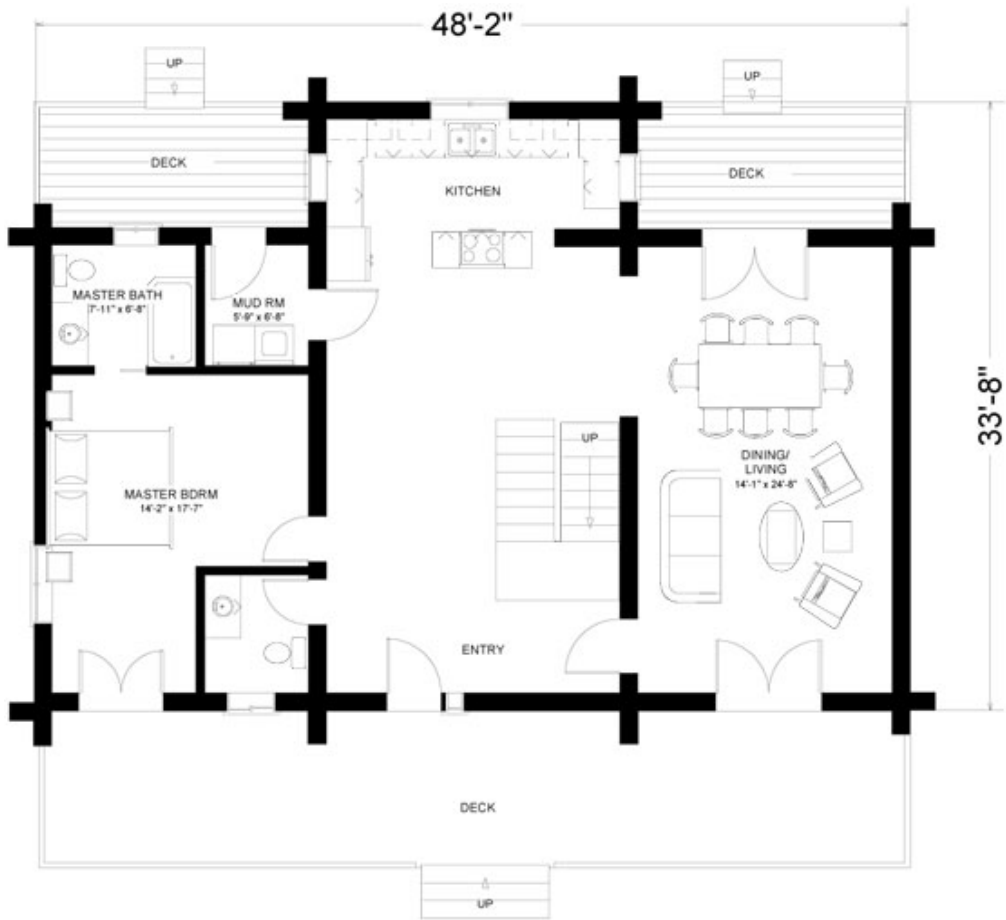
34. Log Home Plan: The Victoria

By: [Big Foot Log and Timber Homes](#)

The large front porch and classic center hallway floor plan have made the 2,542 square foot Victoria one of our most popular models.

The master bedroom features a three-piece en-suite bathroom and private patio. The two upstairs bedrooms share a balcony and a full bathroom. From the log post porch to the soaring cathedral ceiling connecting the great room with the dining area, it's the dramatic architectural styling that sets this open apart.





MAIN FLOOR
1418 SQ FT



SECOND FLOOR

1124 SQ FT

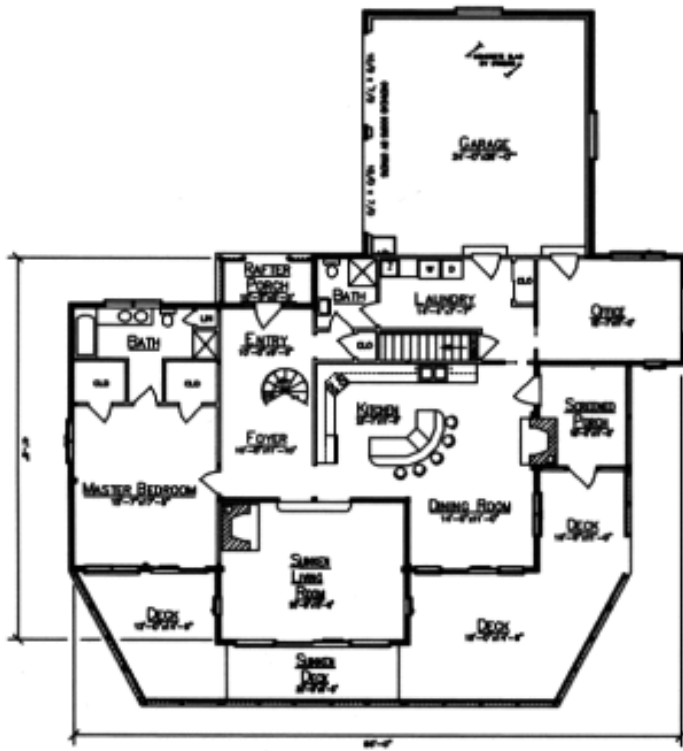
35. Log Home Plan: The Walton's Mountain

By: [Ward Cedar Log Homes](#)

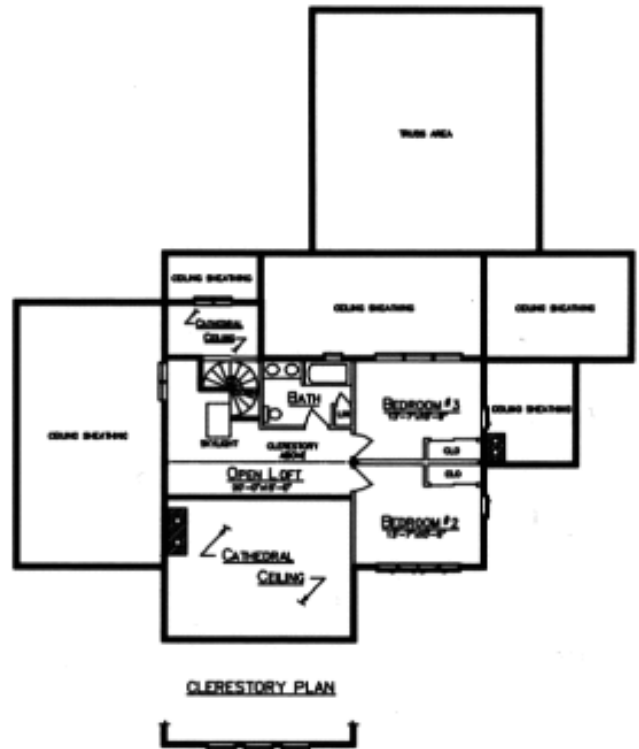
The Walton's Mountain plan's striking contemporary styling allows large windows to dominate one side of the home, letting light flood the interior. Ample deck space and a screened porch allow families to enjoy the outdoors in comfort.

The first floor features a sunken living room and a charming kitchen and dining room. The master suite has his and hers walk-in closets. A spiral staircase gracefully extends to the second floor where there are two additional bedrooms, a full bath, and an open loft overlooking the living area.





FIRST FLOOR PLAN



LOFT PLAN

Want To Build Sheds Like These?



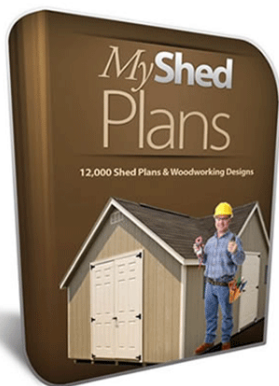
Select from a library of thousands of styles and designs!

[GET INSTANT ACCESS NOW >](#)

Free!

12,000 Shed Plans

From Small Bird Houses To
Large Outdoor Garden Sheds



Free Download

**Discover The Easiest & Fastest Way
To Start Building Remarkable Sheds**

36. Log Home Plan: The Washington Harbor

By: [PrecisionCraft Log Homes & Timber Frame](#)

The Washington Harbor shows how you can add space to your design by including outdoor living space. The outdoor area includes a kitchen and fireplace with unique clerestory dormers that provide natural light above.

Design Features:

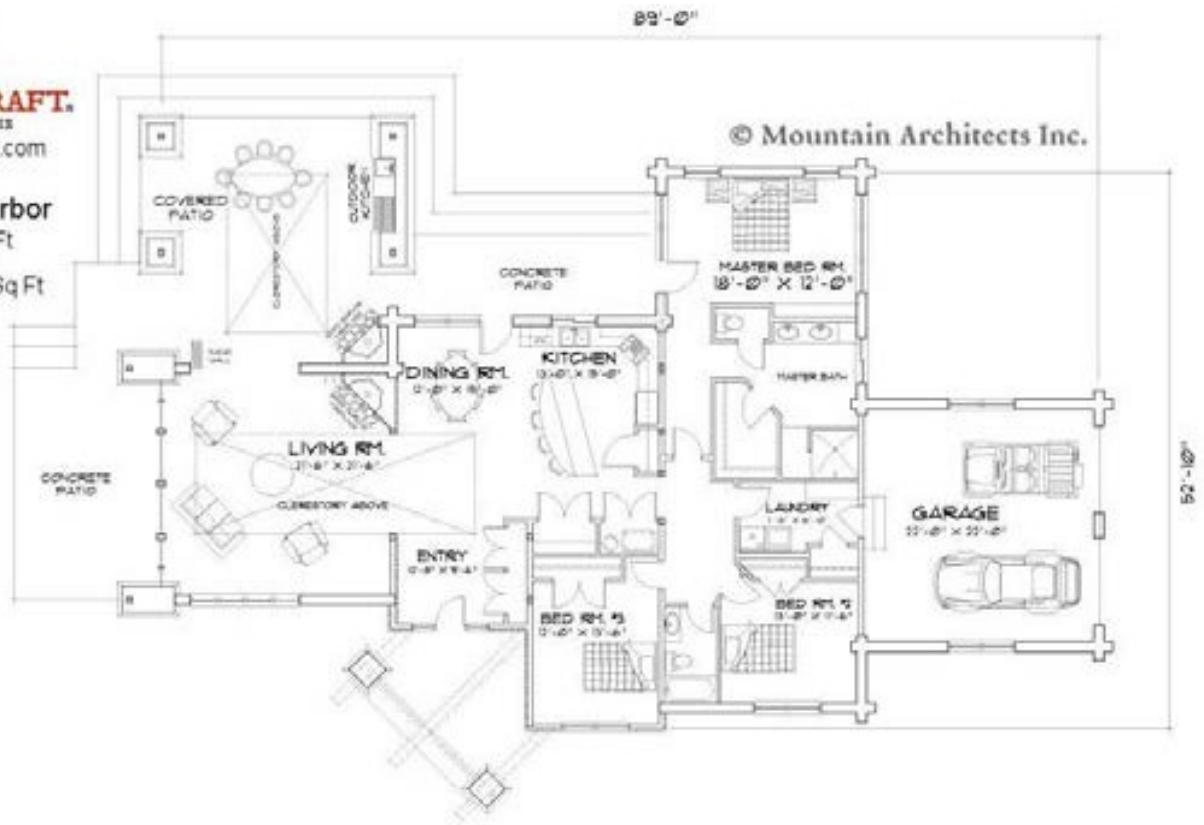
- Magnificent, single level design Unique clerestory dormers
- Luxurious outdoor living area with kitchen





PRECISIONCRAFT.
LOG & TIMBER HOMES
www.precisioncraft.com

Washington Harbor
Area: 2,366 Sq Ft
Main Level: 2,366 Sq Ft



37. Log Home Plan: The Wood River

By: [PrecisionCraft Log Homes & Timber Frame](#)

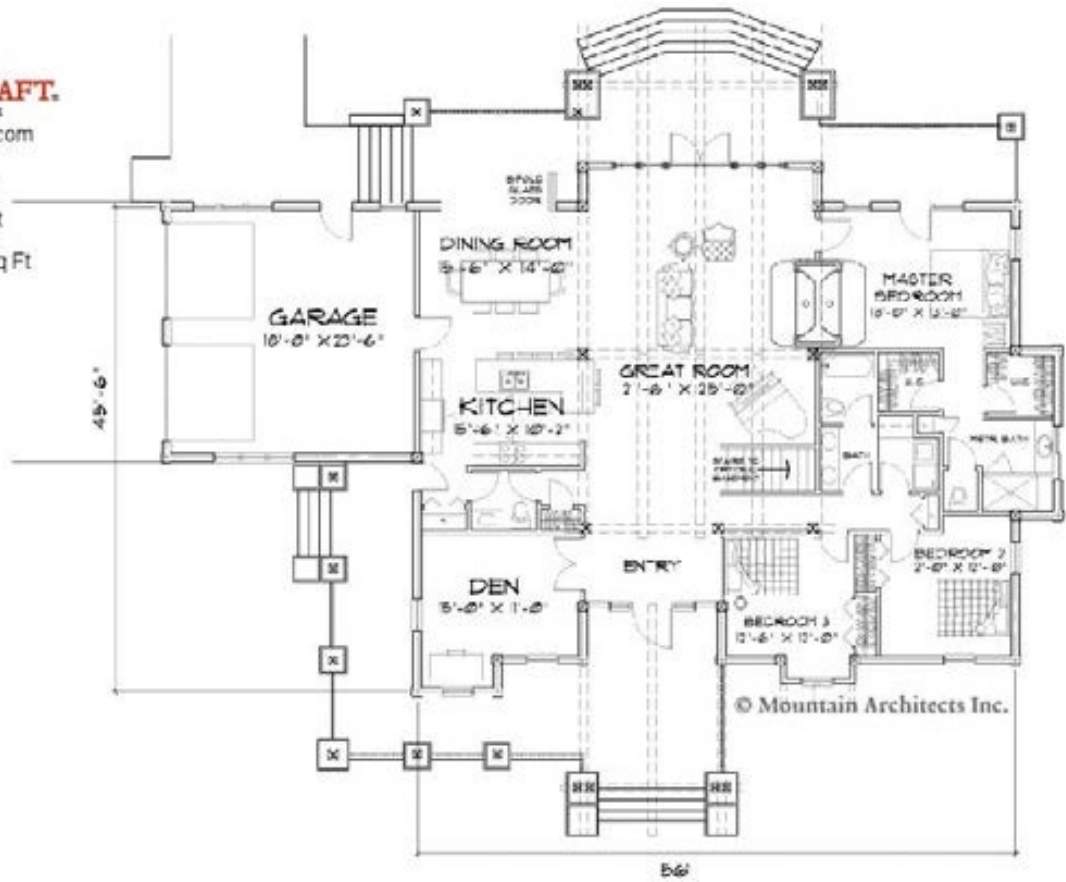
The Wood River is the perfect blend of Craftsman design and mountain style architecture. Design highlights include: exterior columns with metal banding, low sloped roofs and gridded windows.

Design Features:

- Custom timber trusses & timber frame accent
- Gridded windows
- Metal banding at exterior column



Wood River
 Area: 2,581 Sq Ft
 Main Level: 2,561 Sq Ft



38. Log Home Plan: The Musquash

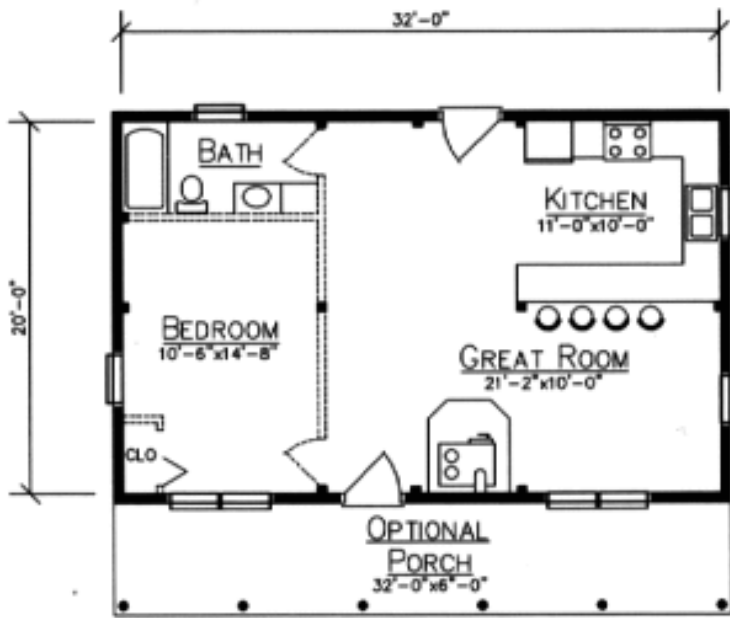
By: [Ward Cedar Log Homes](#)

Our charming camps will provide you with the perfect place to relax, unwind, and leave your troubles behind. Ideal for the lake, the mountains, even the ocean, building one of our Camp Series cabins will give you the ultimate weekend and vacation getaway.

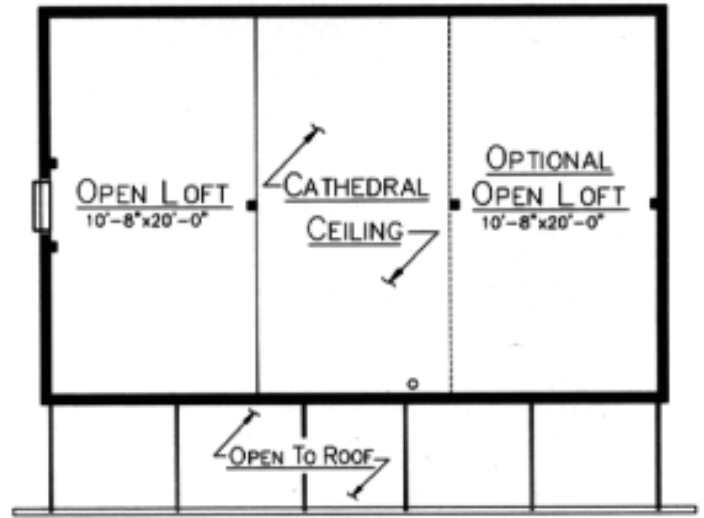
All of the camp designs have open floor plans and sleeping lofts, suggesting a return to the simple life”.

The Baskahegan and Matagamons sleeping lofts extend out over the porch for even more space, while the Telos and the Musquash offer larger front porches so you can spend as much time as possible enjoying the outdoors.





MUSQUASH FIRST FLOOR PLAN



MUSQUASH LOFT PLAN

39. Log Home Plan: The Point Judith

By: [Ward Cedar Log Homes](#)

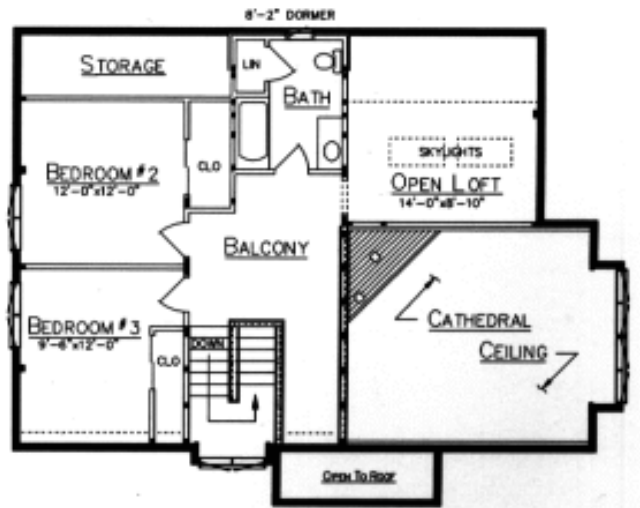
The Point Judith is ideal for a growing family. This beautiful three-bedroom home would be wonderful in a suburban or lakeside setting. The cathedral ceiling family room features a wall of glass, allowing warmth and light to enter the home. T

ucked off to the side on the first floor, the spacious master bedroom has its own private bath and dressing room. The skylighted loft space could easily represent your personal library or den area, and the deck located off of the dining room provides a great place to entertain friends and family.





FIRST FLOOR PLAN



LOFT PLAN

40. Log Home Plan: The Princeton

By: [Ward Cedar Log Homes](#)

The Princeton's graceful design would be as perfect in a mountain setting as it would be in a tree-lined neighborhood. The wrap-around rafter porch is a charming addition to the exterior of the home, while the connected garage provides comfort and convenience.

Inside, the dining/living room is adjacent to the kitchen and there is a full bath located between the master bedroom and an additional bedroom or office.

Dormers on the upper floor allow light to fill the upstairs as well as the cathedral ceiling living room. The second floor also features a full bath and two additional bedrooms.



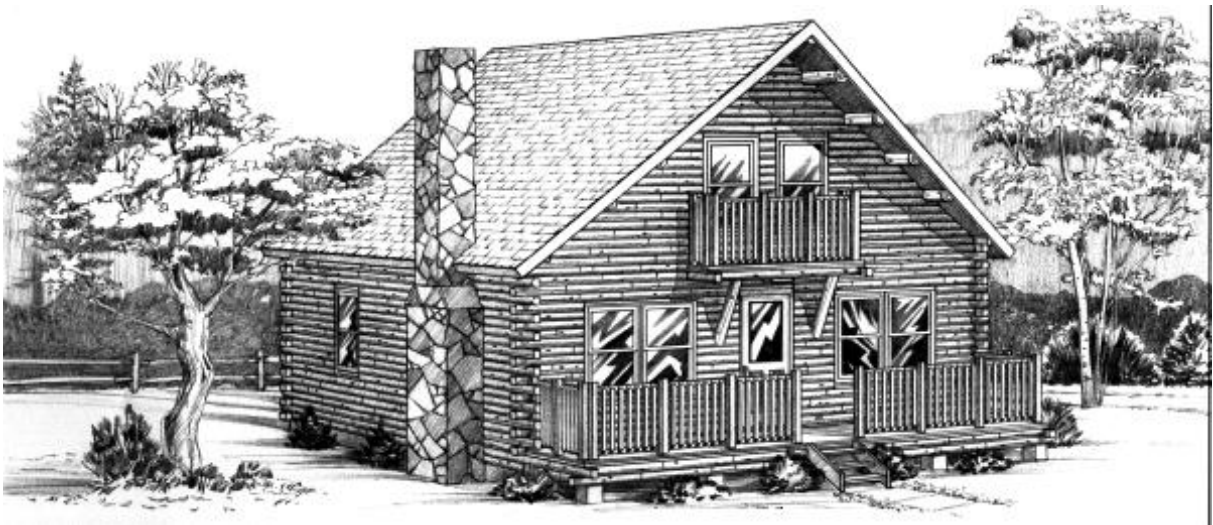
41. Log Home Plan: The Riverton

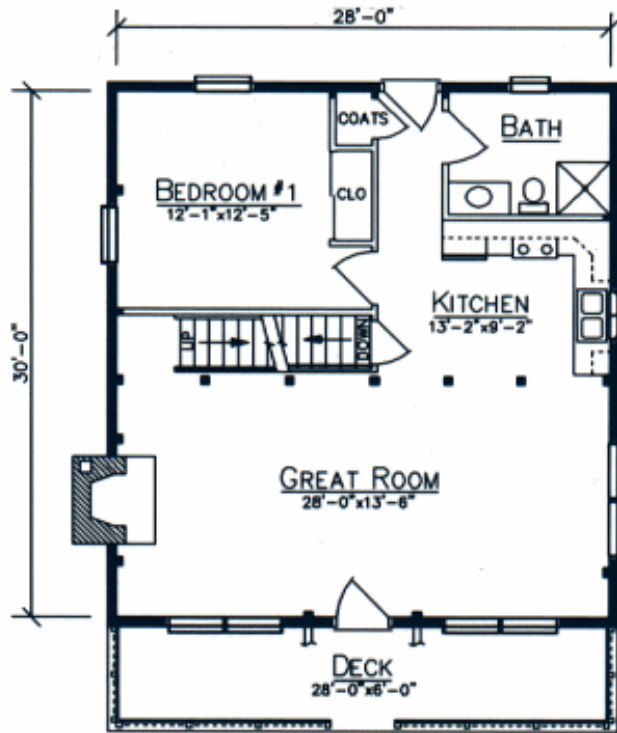
By: [Ward Cedar Log Homes](#)

This chalet-style home's windows and deck space allow you to take advantage of the scenery. It would be nice situated in the mountains as a vacation retreat or in the suburbs as an efficient year-round home.

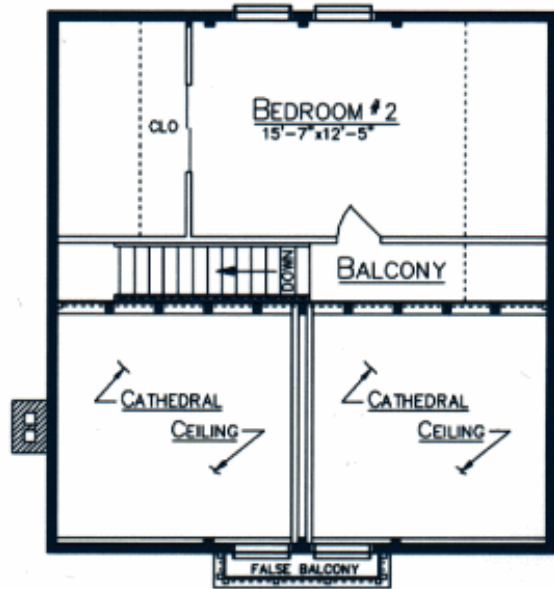
When you enter the Riverton, you are greeted by the impressive cathedral ceiling great room, a wonderful place to entertain and have family gatherings.

A spacious kitchen abuts a full bath with a bedroom tucked into the corner of the first floor. A bedroom located on the second floor completes the home.





FIRST FLOOR PLAN



LOFT PLAN

42. Log Home Plan: The Sedona

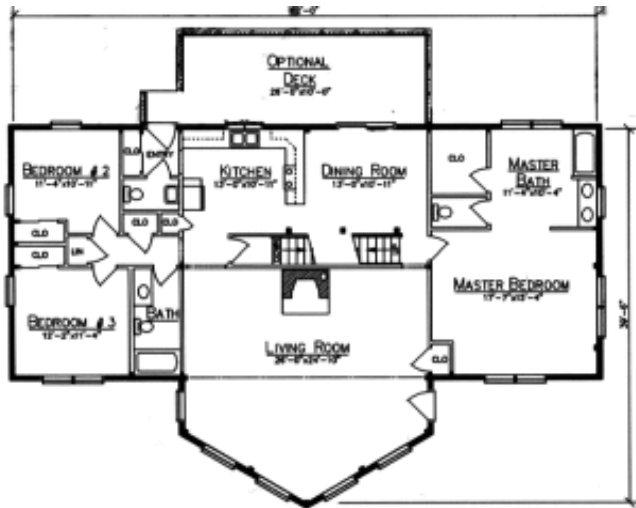
By: [Ward Cedar Log Homes](#)

The extraordinary prow-front architecture of the Sedona offers impressively large windows that allow light to flood the living area of this three-bedroom home.

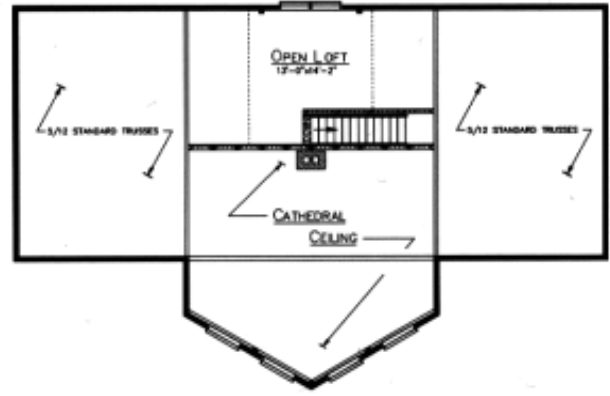
Inside, the cathedral ceiling soars upward to the roof, where an open loft provides that personal space for you and the family. The first floor features a master suite with its own private bath and walk-in closet, plus two additional bedrooms and a full bath.

The kitchen and dining room lead to optional deck space perfect for entertaining family and friends.





FIRST FLOOR PLAN



LOFT PLAN

43. Log Home Plan: The Darlington

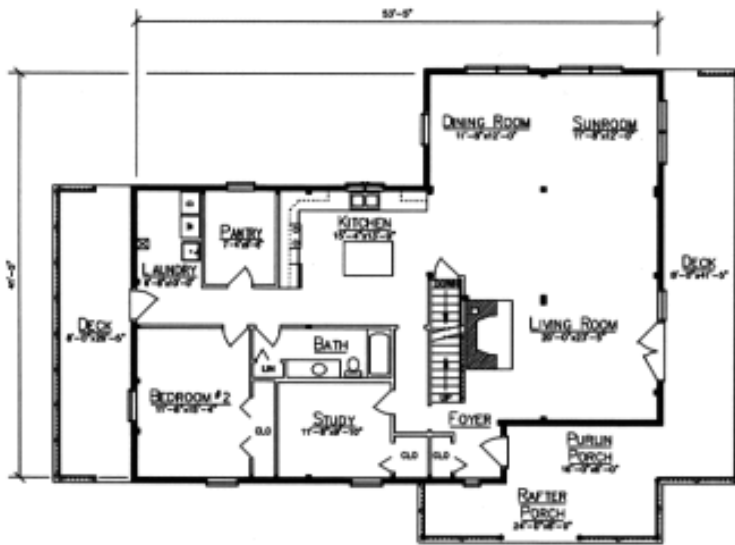
By: [Ward Cedar Log Homes](#)

The Darlington combines tradition with innovation. The wrap-around deck allows for enjoyment of the outdoors, while the sunroom, tucked away in the back, provides a place to enjoy the day in comfort.

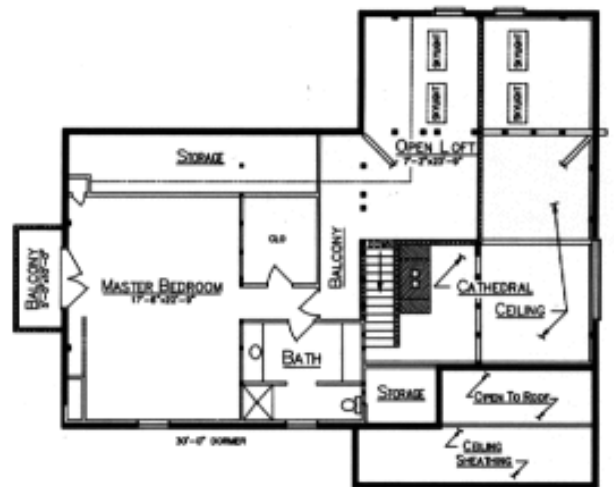
The spacious kitchen offers a large pantry and easy access to the dining room. The large, open living room gives the first floor a comfortable, homey feeling.

A full bath, study and bedroom completes the first floor plan. The second floor is dominated by the master bedroom with its luxurious full bath and open loft.





FIRST FLOOR PLAN



LOFT PLAN

Simple Trick Cracks The Code To Making Any DIY Project

WATCH THE VIDEO NOW:



You can turn even the most daunting DIY project into reality with this magic tool.

[WATCH THE MAGIC TOOL IN ACTION NOW](#)

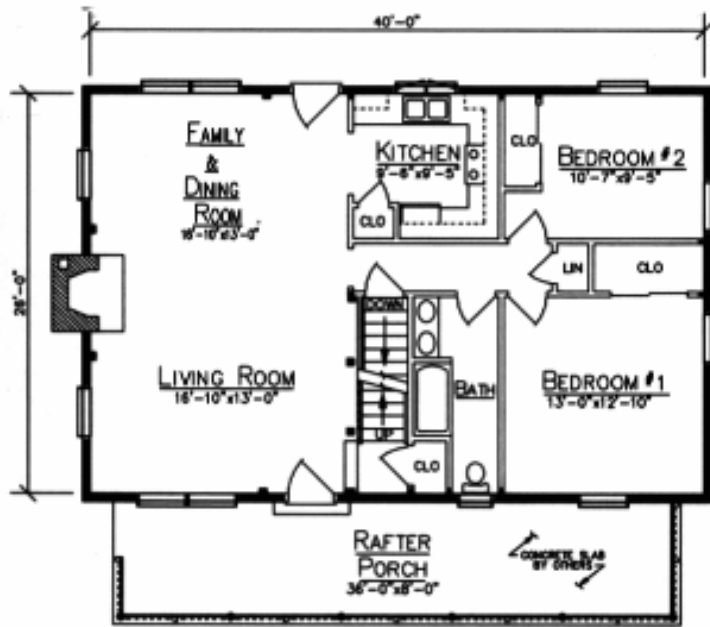
44. Log Home Plan: The Decatur

By: [Ward Cedar Log Homes](#)

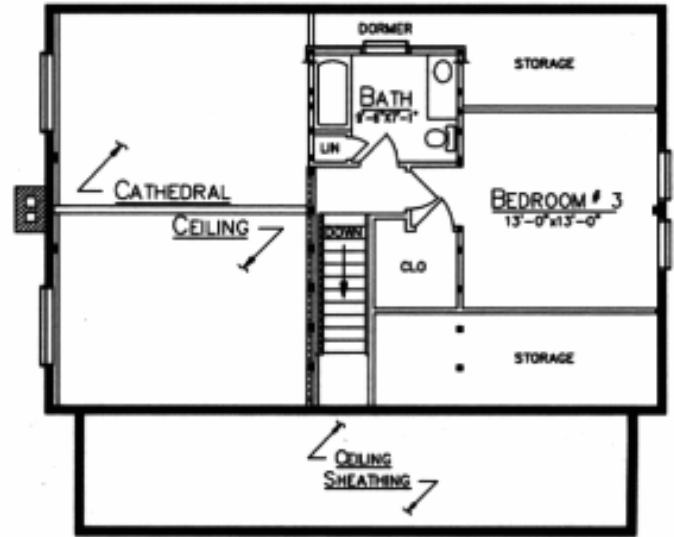
Combining intimacy with efficiency, the Decatur features a spacious kitchen and an open dining and living area.

Two bedrooms, a full bath and closet space occupy the rest of the first floor. The master suite with its attached walk-in closet and an adjacent full bath occupies the entire second floor, creating a feeling of quiet privacy.





FIRST FLOOR PLAN



LOFT PLAN

45. Log Home Plan: The Easton

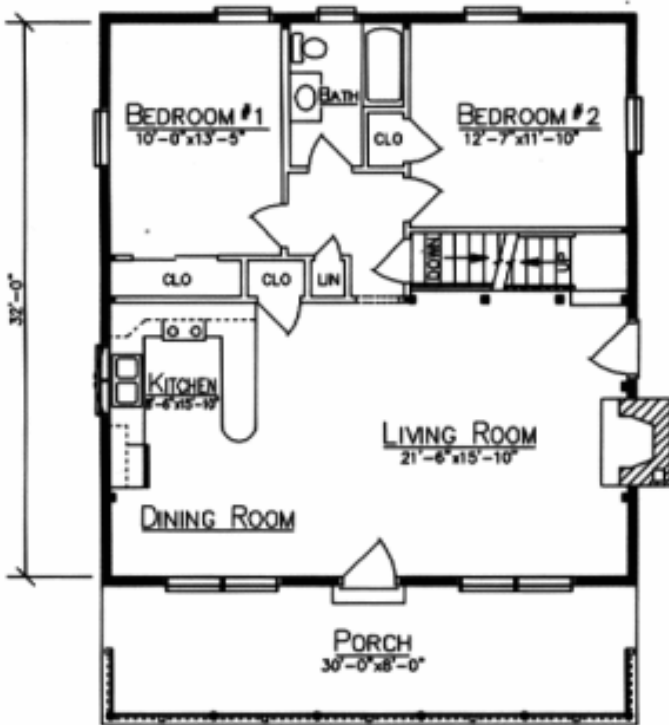
By: [Ward Cedar Log Homes](#)

Resembling a classic mountain lodge, the Easton would serve families well as a vacation retreat in the mountains or as a year-round home.

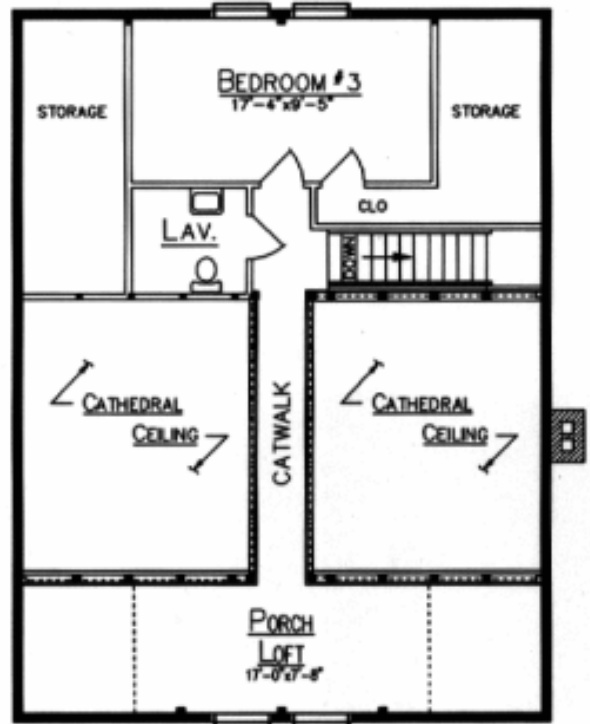
The first floor features a large living/dining room separated from the kitchen by a convenient snack bar. A spacious front porch is located off of the first floor and an optional daylight basement offers added convenience and living space.

Upstairs, the third bedroom is flanked by storage space and has its own half-bath. A catwalk leads to the porch loft, a wonderful place to set up a small home office or sitting room.





FIRST FLOOR PLAN



LOFT PLAN

46. Log Home Plan: The Crested Butte

By: [PrecisionCraft Log Homes & Timber Frame](#)

At first glance, the exterior of the Crested Butte is so fascinating that the interior of the plan is overlooked. All the angles and interesting pop outs provide great living spaces within the home itself.

Design Features

- Stone & timber frame turret Hybrid log & timber home
- Dining room with a view from three sides



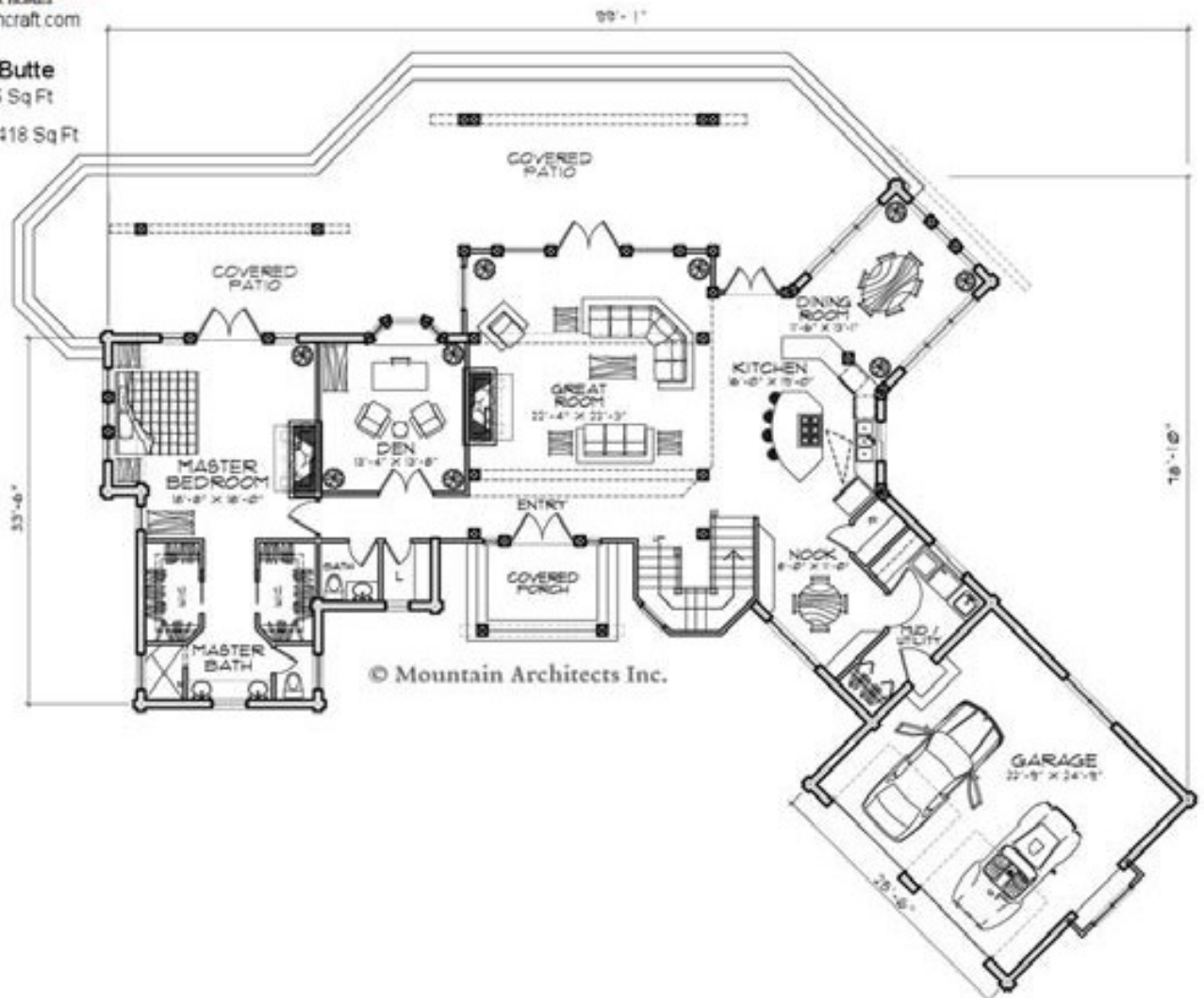


PRECISIONCRAFT.
LOG & TIMBER HOMES
www.precisioncraft.com

Crested Butte

Area: 3,055 Sq Ft

Main Level: 2,418 Sq Ft



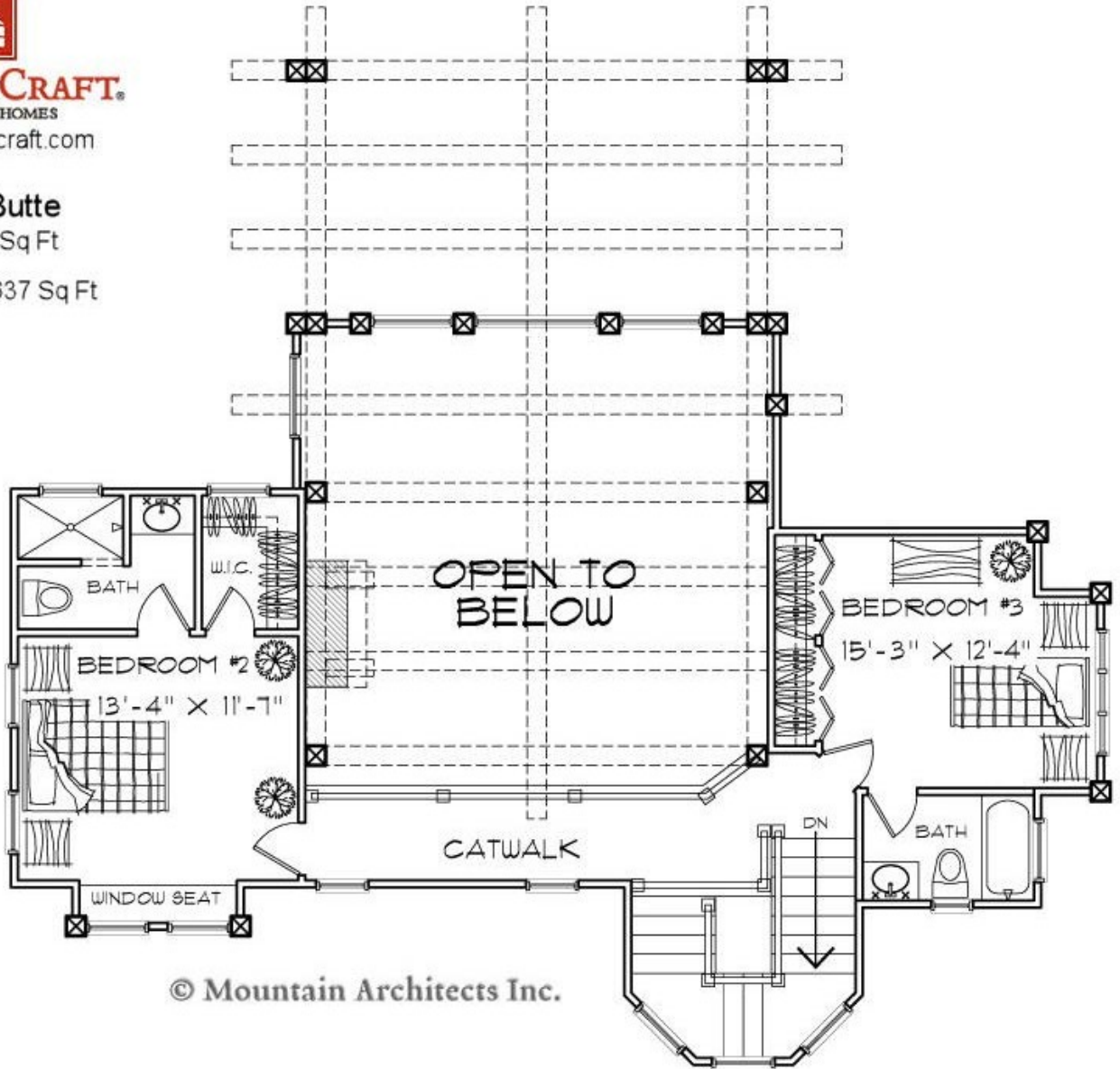


PRECISIONCRAFT.
LOG & TIMBER HOMES
www.precisioncraft.com

Crested Butte

Area: 3,055 Sq Ft

Second Level: 637 Sq Ft



© Mountain Architects Inc.

47. Log Home Plan: The Cumberland

By: [PrecisionCraft Log Homes & Timber Frame](#)

With 16" diameter handcrafted log walls and a dramatic custom truss, which extends from the open living area through to the patio, the Cumberland makes a dramatic statement for its smaller size.

Design Features:

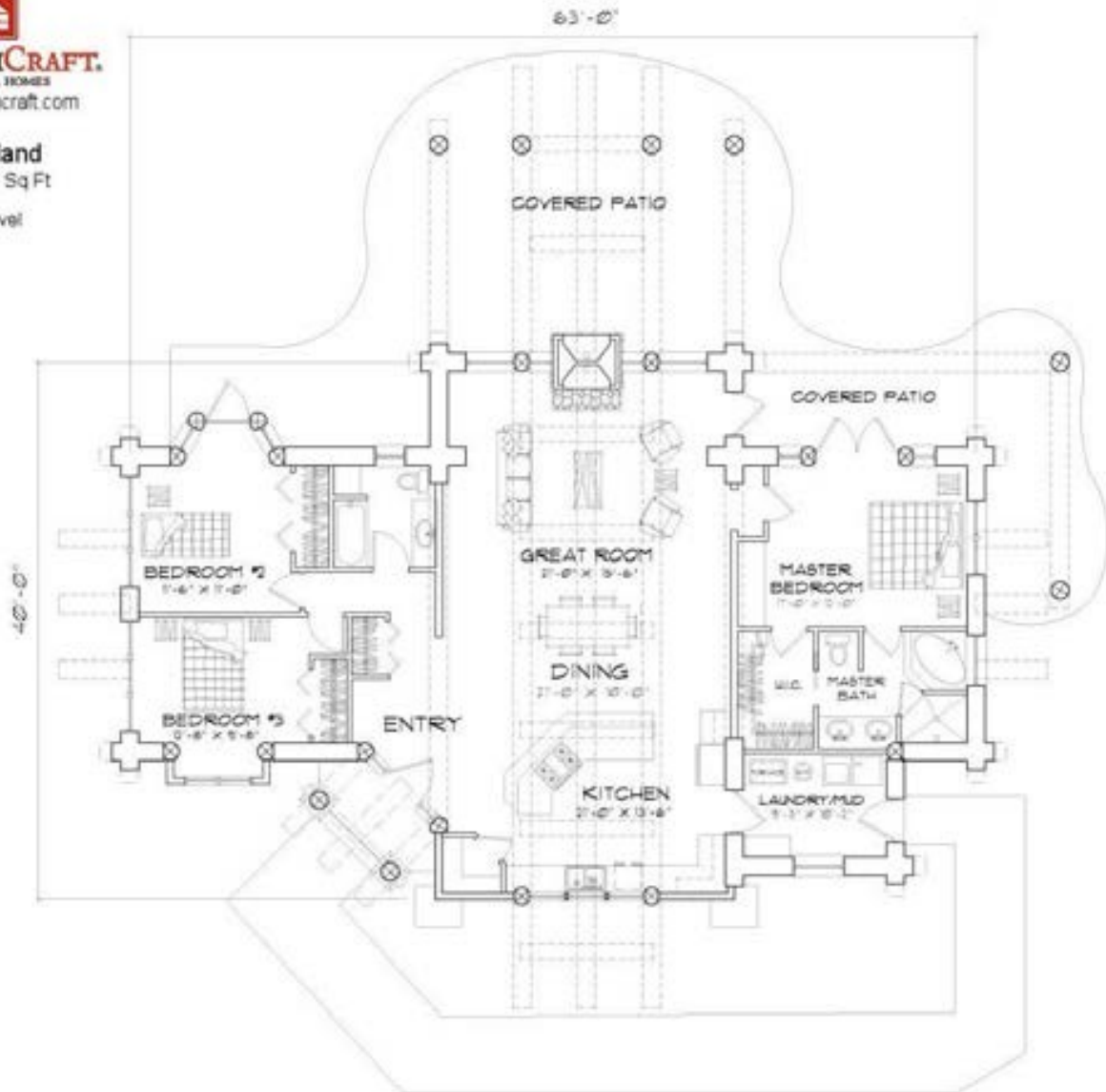
- Dramatic truss extends from open living area through to the patio
- Dual fireplace
- 16" diameter handcrafted log walls and posts





PRECISIONCRAFT.
LOG & TIMBER HOMES
www.precisioncraft.com

Cumberland
Area: 1,977 Sq Ft
Main Level



48. Log Home Plan: The Dakota

By: [PrecisionCraft Log Homes & Timber Frame](#)

The Dakota is a small space, with a lot of character. The curved timber frame glass prow provides expansive views outside while the custom timber trusses that line the great room showcase the beauty inside.

Design Features:

- Large, massive fireplaces
- Abundance of large windows
- Expansive decks with multiple access



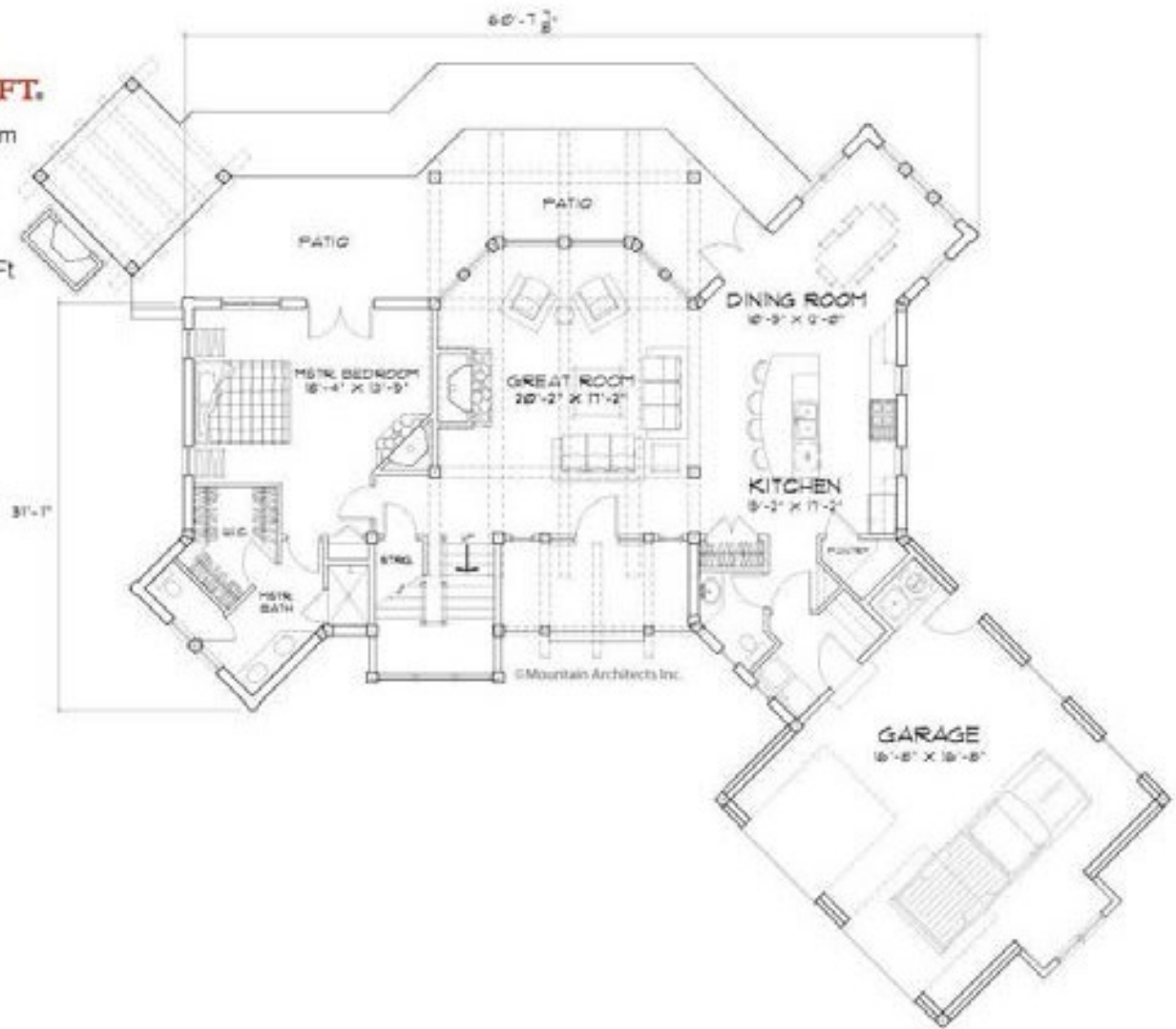


PRECISIONCRAFT.
LOG & TIMBER HOMES
www.precisioncraft.com

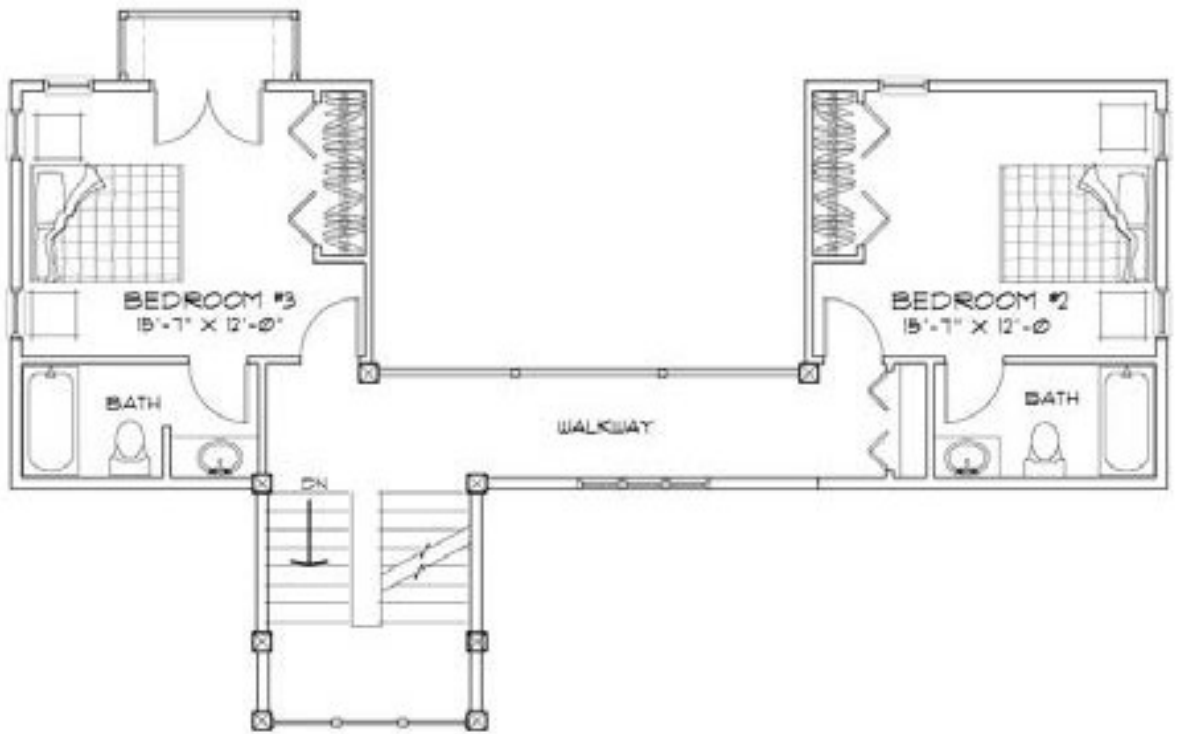
Dakota

Area: 2,421 Sq Ft

Main Level: 1,688 Sq Ft



Dakota
Area: 2,421 Sq Ft
Second Level: 733 Sq Ft



49. Log Home Plan: The Hidden Creek

By: [PrecisionCraft Log Homes & Timber Frame](#)

Each level of this Craftsman design houses a different group of the family. The master is on the main, with extra rooms in the basement and bunk rooms in the loft. While the kitchen and living areas have room for all.

Design Features:

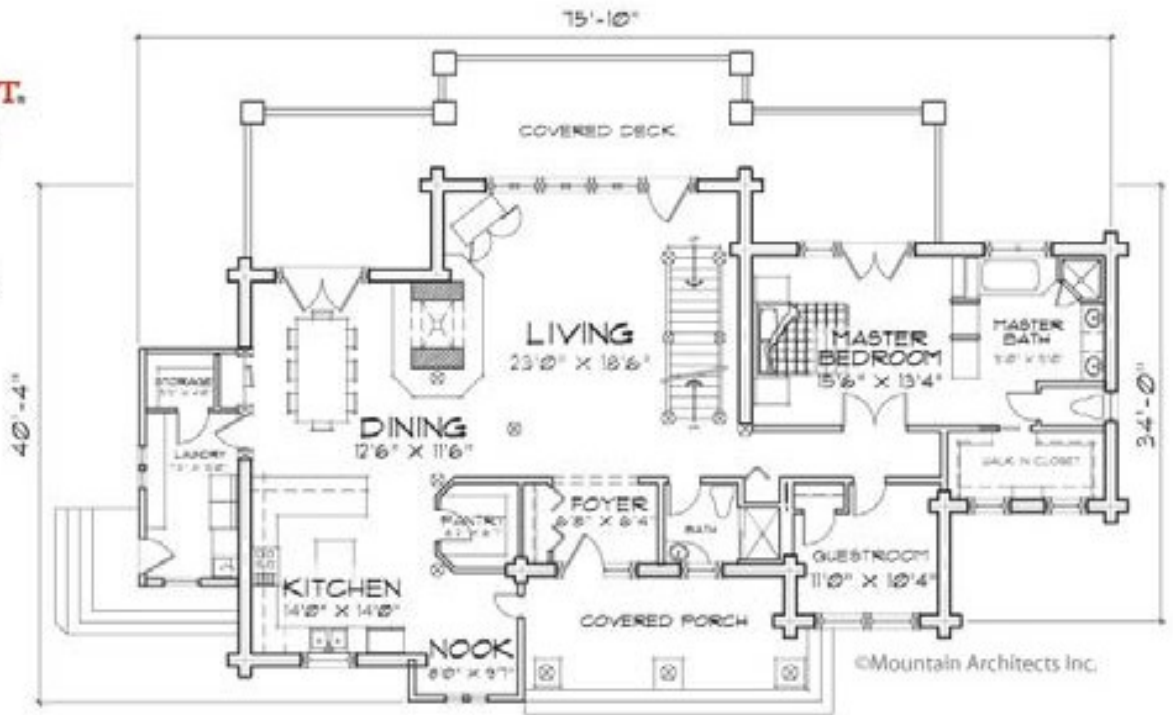
- Handcrafted log home design with timber frame elements
- Covered porch
- Master bedroom conveniently located on first floor





PRECISIONCRAFT.
LOG & TIMBER HOMES
www.precisioncraft.com

Hidden Creek
Area: 3,786 Sq Ft
Main Level: 2,184 Sq Ft

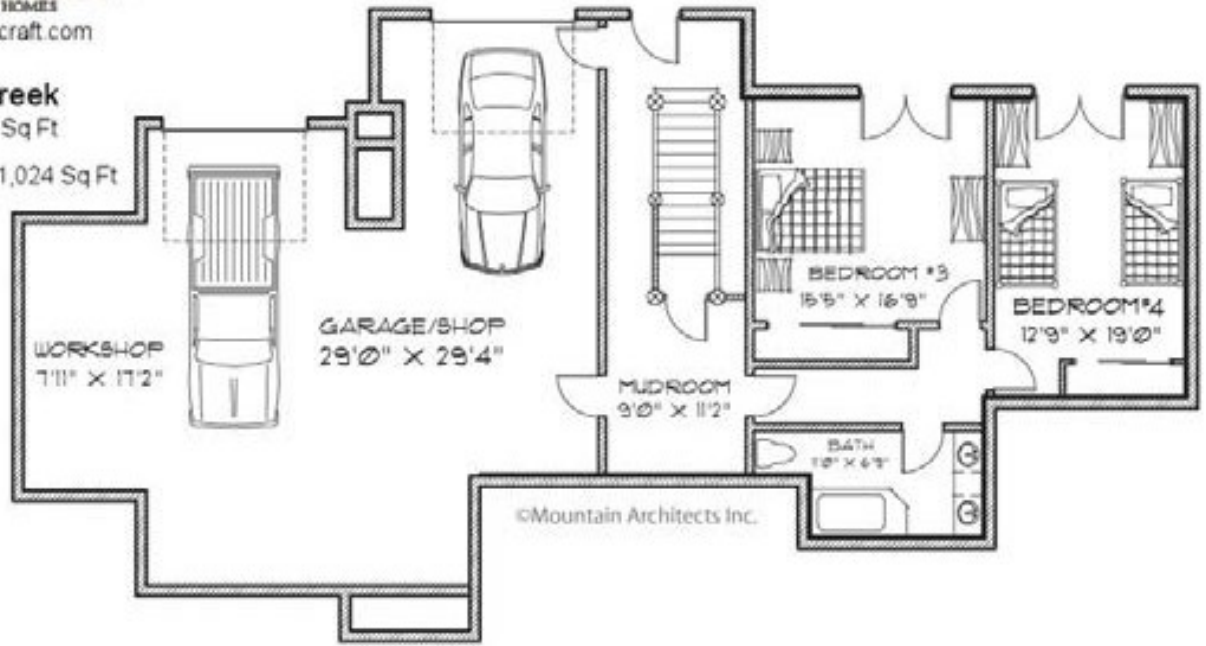




PRECISIONCRAFT
LOG & TIMBER HOMES
www.precisioncraft.com

Hidden Creek
Area: 3,786 Sq Ft

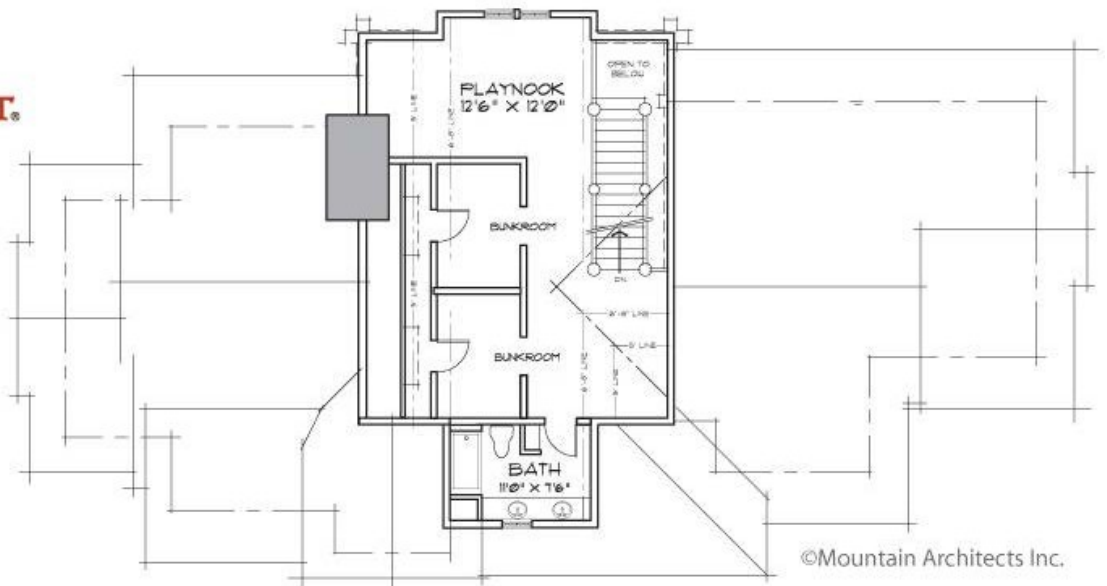
Basement Level: 1,024 Sq Ft



PRECISIONCRAFT
LOG & TIMBER HOMES
www.precisioncraft.com

Hidden Creek
Area: 3,786 Sq Ft

Second Level: 578 Sq Ft



50. Log Home Plan: The Hickory Falls

By: [PrecisionCraft Log Homes & Timber Frame](#)

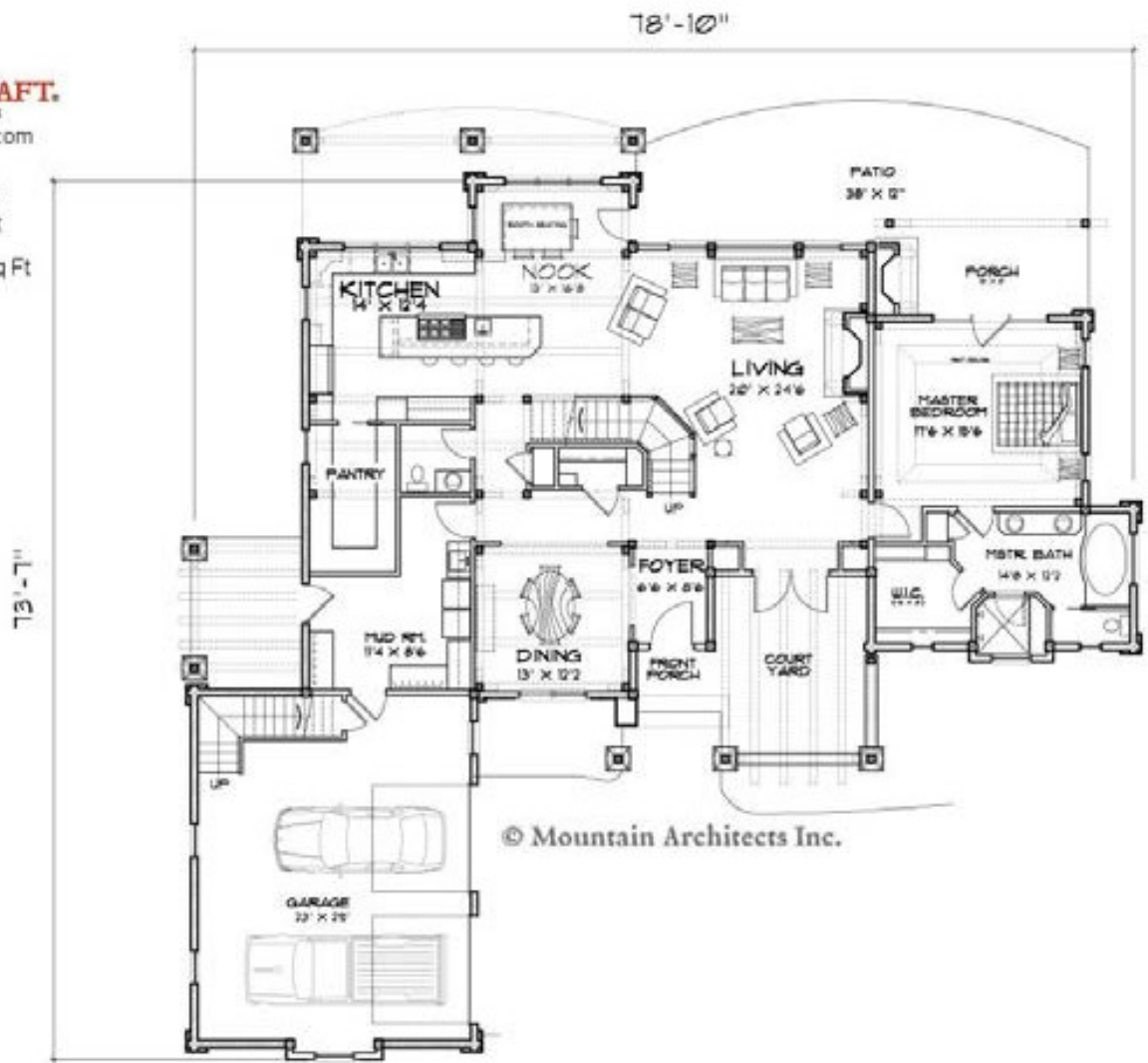
The Hickory Falls is another design with great spaces. A pergola covered courtyard accents the entry, the master suite has a private patio with fireplace, and there is a lovely nook with a view of the yard.

Design Features:

- Hybrid design of milled log & timber frame elements Master Suite with outdoor fireplace
- Custom, timber frame entry truss



Hickory Falls
Area: 3,176 Sq Ft
Main Level: 2,310 Sq Ft





PRECISIONCRAFT

LOG & TIMBER HOMES

www.precisioncraft.com

Hickory Falls

Area: 3,176 Sq Ft

Second Level: 866 Sq Ft



© Mountain Architects Inc.

Download 16,000 Woodworking Plans

This is a collection of [16,000 woodworking plans](#) (the worlds largest collection available online or anywhere else).

From decks, to sheds, to furniture and crafts, to chairs & tables, to file cabinets and more. This is the handyman woodworkers dream collection.



16,000 Woodworking Projects

- ✓ Decks
- ✓ Sheds
- ✓ Greenhouses
- ✓ Chairs & Tables
- ✓ File Cabinets
- ✓ And Much More!

#1 Woodworking Resource

Download Now!



Thousands of Ideas For Your Next Project!

